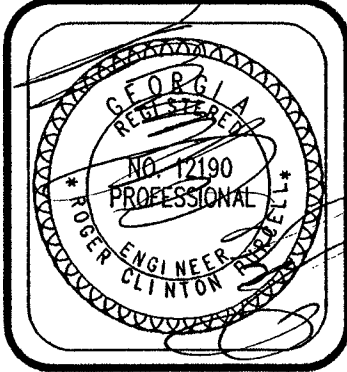
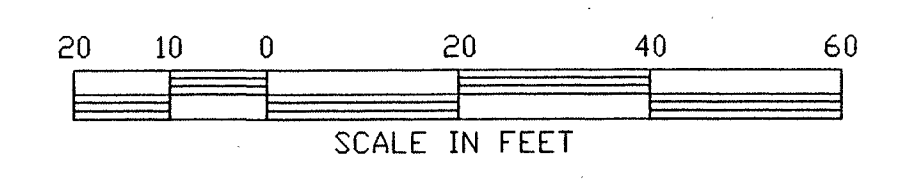


LEGEND:

- SITE:**
 L.A. LANDSCAPE AREA
 TC - TOP OF CURB(AT BACK)
 --- EXISTING CURBLINE
 --- PRO-CURB & GUTTER
 --- PRO-HEADER CURB
 --- BUILDING SETBACK LINE
 --- EXISTING CONTOUR
 --- PROPOSED CONTOUR
 23.3 EXISTING SPOT ELEVATION
 + 22.3 PROPOSED SPOT ELEVATION
 @ AISLE/ROAD
 --> SLOPE DIRECTION ARROW
 XX FENCE
 --- MARSH LINE \ WETLAND LINE
 --- UNDERGROUND ELECTRIC LINE
 --- DRAINAGE DITCH / SWALE
 --- CLEARING LIMITS
 --- CLEARING LIMITS
- UTILITY:**
 --- EXISTING SANITARY SEWER
 --- PROPOSED SANITARY SEWER
 --- UTILITY/OVERHEAD ELEC.
 --- UG UTILITY/GAS LINE
 --- UG PROPOSED UTILITY/GAS LINE
 --- PROPOSED WATER
 --- EXISTING WATER
 --- UT TELEPHONE LINE
 (CO) CLEAN OUT
 ● SANITARY SEWER MH
 FH - FIRE HYDRANT
 GV - GATE VALVE
 DBFP - DOUBLE CHECK BACKFLOW PREVENTOR
 WM - WATER METER
 SVC - SERVICE
 CBV - CURB BALL VALVE
- EROSION CONTROL:**
 (Rd) ROCK FILTER DAM
 (B) BUFFER
 (Co) CONSTRUCTION EXIT / ENTRANCE
 (DI) DIVERSION BERM PERM.
 (SI) STORM OUTLET PROTECTION
 (Dz2) RIP RAP 10 SQ YRDS OF 10-25 LB STONE
 (Dz3) DISTURBED AREA STABILIZATION
 (Dz3) TEMPORARY SEEDING
 (Dz3) DISTURBED AREA STABILIZATION
 (Dz3) PERMANENT SEEDING/LANDSCAPING
 (Sd) SEDIMENT BARRIER (TEMP)
 --> SLOPE DIRECTION ARROW
- STORM DRAINAGE:**
 (SD) STORM DRAIN MH
 --- FLARED END SECTION
 [] PROPOSED GRATE INLET
 [] EXISTING GRATE INLET
 (SD) PROPOSED JUNCTION BOX / MH
 [] EXISTING JUNCTION BOX / MH
 --- EXISTING STORM DRAIN
 --- PROPOSED STORM DRAIN

NOTES:
 1. DEMOLISH AND REMOVE ALL STRUCTURES, PAVING AND TREES WITHIN CLEARING LIMITS.



REVISIONS

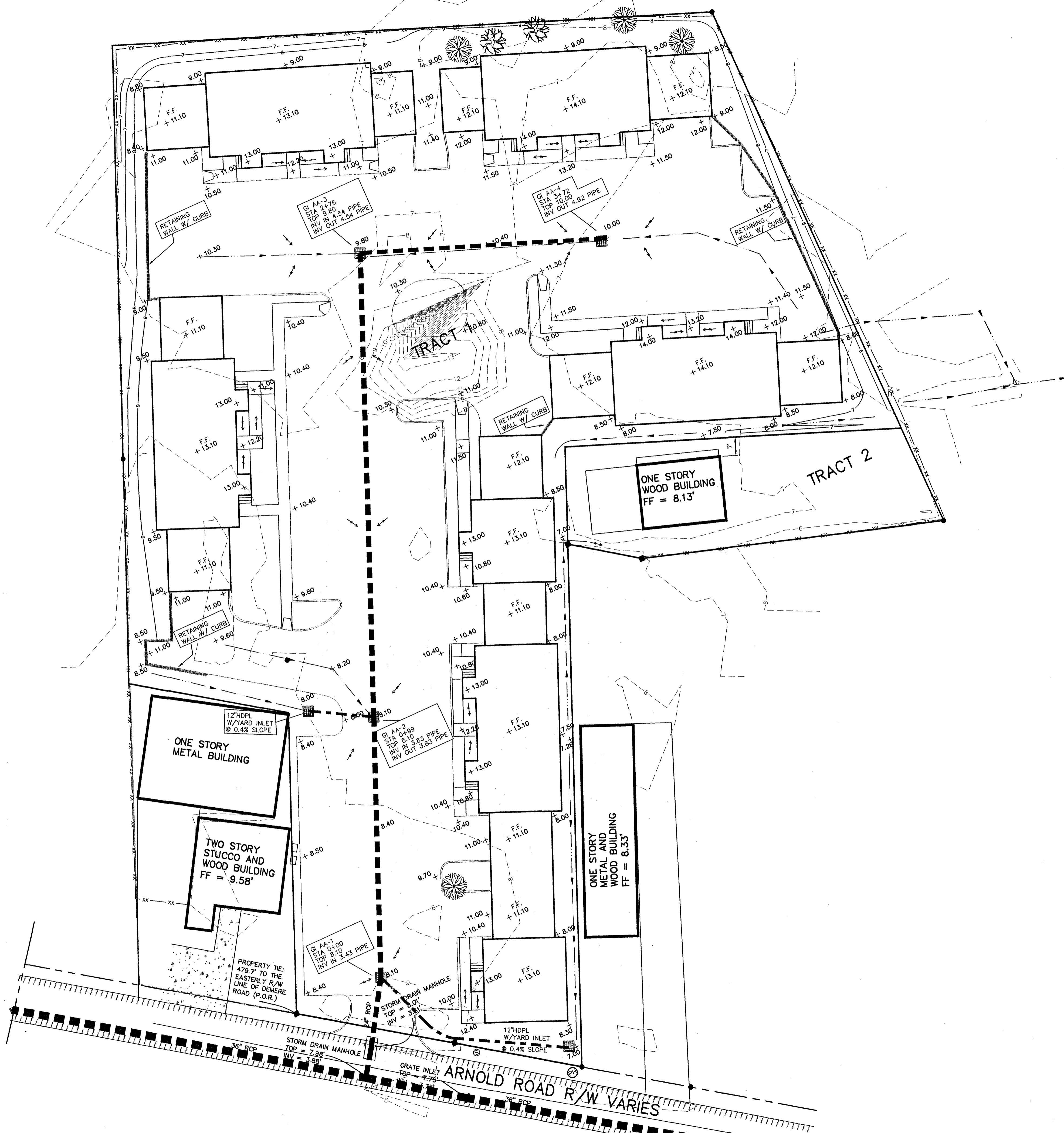
| NO. | DATE | BY | COMMENTS |
|-----|------|----|-------------------|
| 1 | 05-4 | | GLYNN CO COMMENTS |

SITE DEMOLITION PLAN
 ISLAND COTTAGE & BUSINESS CENTER
 CIVIL DRAWINGS
 GLYNN COUNTY GA.

PRUITT & PURCELL, P.C.
 CIVIL AND STRUCTURAL ENGINEERS
 SURVEYORS AND LAND PLANNERS
 3018 CYPRESS HILL RD., BIRMINGHAM, AL 35205 (813) 265-7636 (FAX) 265-4966

DRAWN BY: CPR
 DATE: 4-15-98
 JOB #: 98017
 CHECKED: ROP
 SCALE: AS SHOWN
 JOB FILE: 98017

C-3
 OF 10



LEGEND:

SITE:

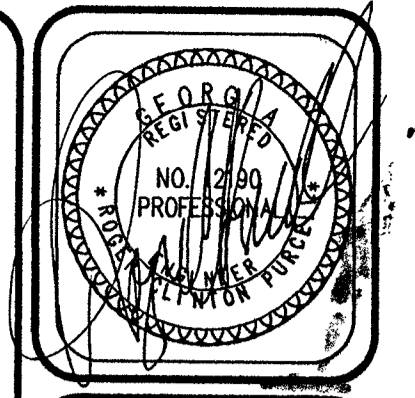
- L.A. LANDSCAPE AREA
 - TC - TOP OF CURB(AT BACK)
 - — — — — EXISTING CURBLINE
 - — — — — PRO-CURB & GUTTER
 - — — — — PRO-HEADER CURB
 - — — — — BUILDING SETBACK LINE
 - - - - - EXISTING CONTOUR
 - — — — — PROPOSED CONTOUR
 - 22.3 EXISTING SPOT ELEVATION
 - + 22.3 PROPOSED SPOT ELEVATION
 - AISLE/ROAD
 - SLOPE DIRECTION ARROW
 - XX — FENCE
 - MARSH LINE \ WETLAND LINE
 - UNDERGROUND ELECTRIC LINE
 - DRAINAGE DITCH / SWALE
- UTILITY:**
- — — — — EXISTING SANITARY SEWER
 - — — — — PROPOSED SANITARY SEWER
 - — — — — UTILITY/OVERHEAD ELEC.
 - — — — — UTILITY/GAS LINE
 - — — — — PROPOSED UTILITY/GAS LINE
 - — — — — PROPOSED WATER
 - — — — — EXISTING WATER
 - TELEPHONE LINE
 - ⊙ CLEAN OUT
 - ⊙ SANITARY SEWER MH
 - FH - FIRE HYDRANT
 - GV - GATE VALVE
 - DBFP - DOUBLE CHECK BACKFLOW PREVENTOR
 - WM - WATER METER

EROSION CONTROL:

- ⊙ ROCK FILTER DAM
- ⊙ BUFFER
- ⊙ CONSTRUCTION EXIT / ENTRANCE
- ⊙ DIVERSION BERM PERM.
- ⊙ STORM OUTLET PROTECTION
- ⊙ RIP RAP 10 SQ YRDS OF 10-25 LB STONE
- ⊙ DISTURBED AREA STABILIZATION
- ⊙ TEMPORARY SEEDING
- ⊙ DISTURBED AREA STABILIZATION
- ⊙ PERMANENT SEEDING/LANDSCAPING
- ⊙ SEDIMENT BARRIER (TEMP)
- SLOPE DIRECTION ARROW

STORM DRAINAGE:

- ⊙ STORM DRAIN MH
- ⊙ FLARED END SECTION
- ⊙ PROPOSED GRATE INLET
- ⊙ EXISTING GRATE INLET
- ⊙ PROPOSED JUNCTION BOX / MH
- ⊙ EXISTING JUNCTION BOX / MH
- — — — — EXISTING STORM DRAIN
- — — — — PROPOSED STORM DRAIN

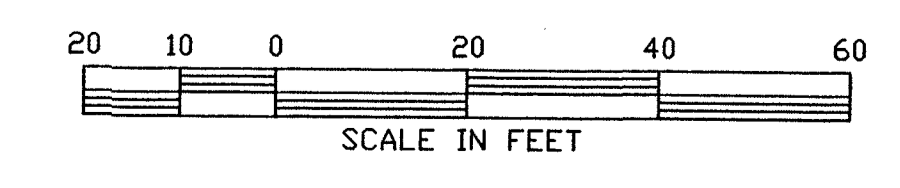


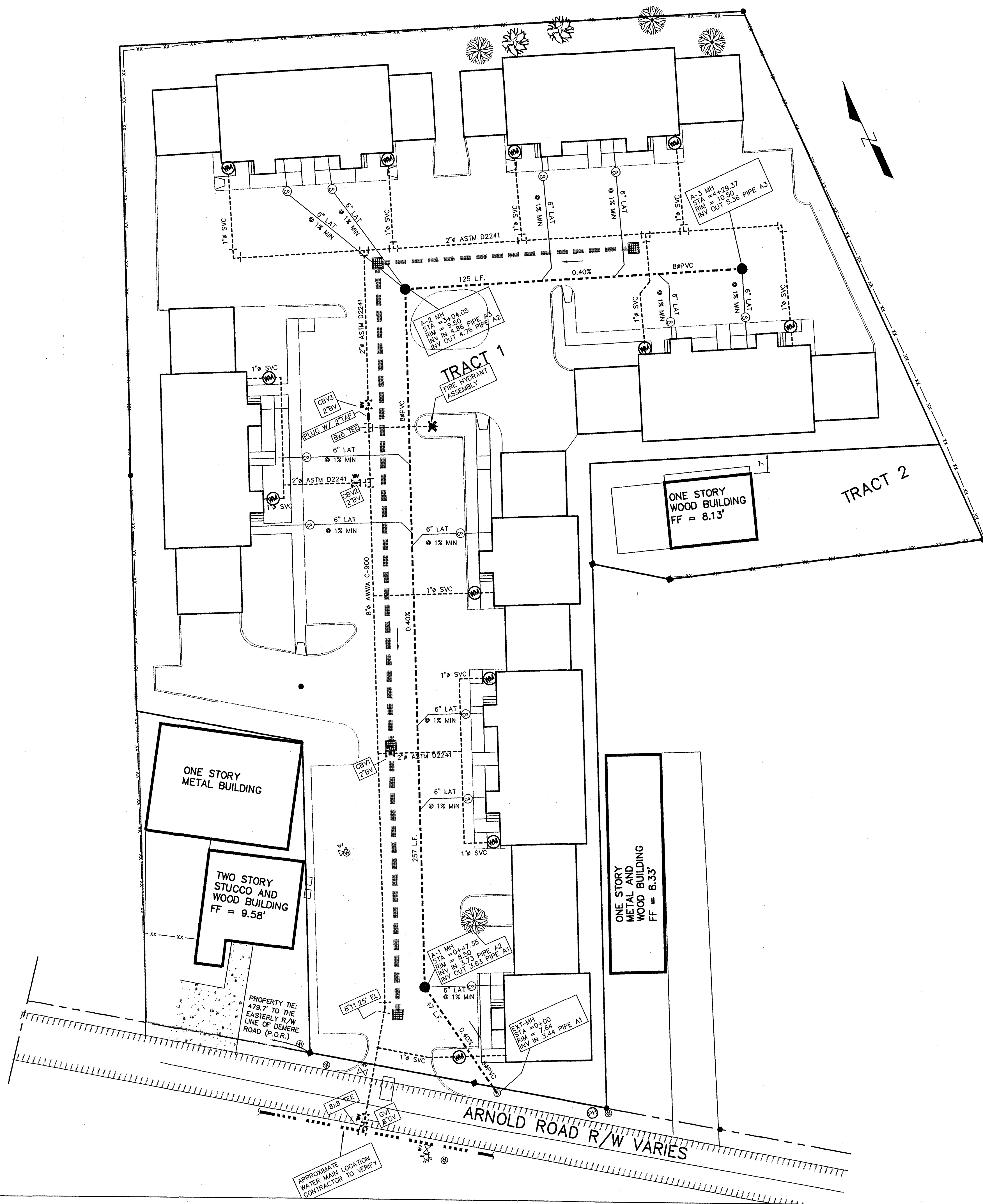
| NO. | REVISIONS | DATE |
|-----|-----------|------|
| | | |
| | | |
| | | |
| | | |
| | | |
| | | |
| | | |
| | | |
| | | |
| | | |

GRADING & DRAINAGE PLAN
ISLAND COTTAGE & BUSINESS CENTER
CIVIL DRAWINGS
GLYNN COUNTY GA.

PRUITT & PURCELL, P.C.
 CIVIL AND STRUCTURAL ENGINEERS
 SURVEYORS AND LAND PLANNERS
 215 W. CENTRE ST., SUITE 200, MARIETTA, GA. 30060 (404) 592-4000

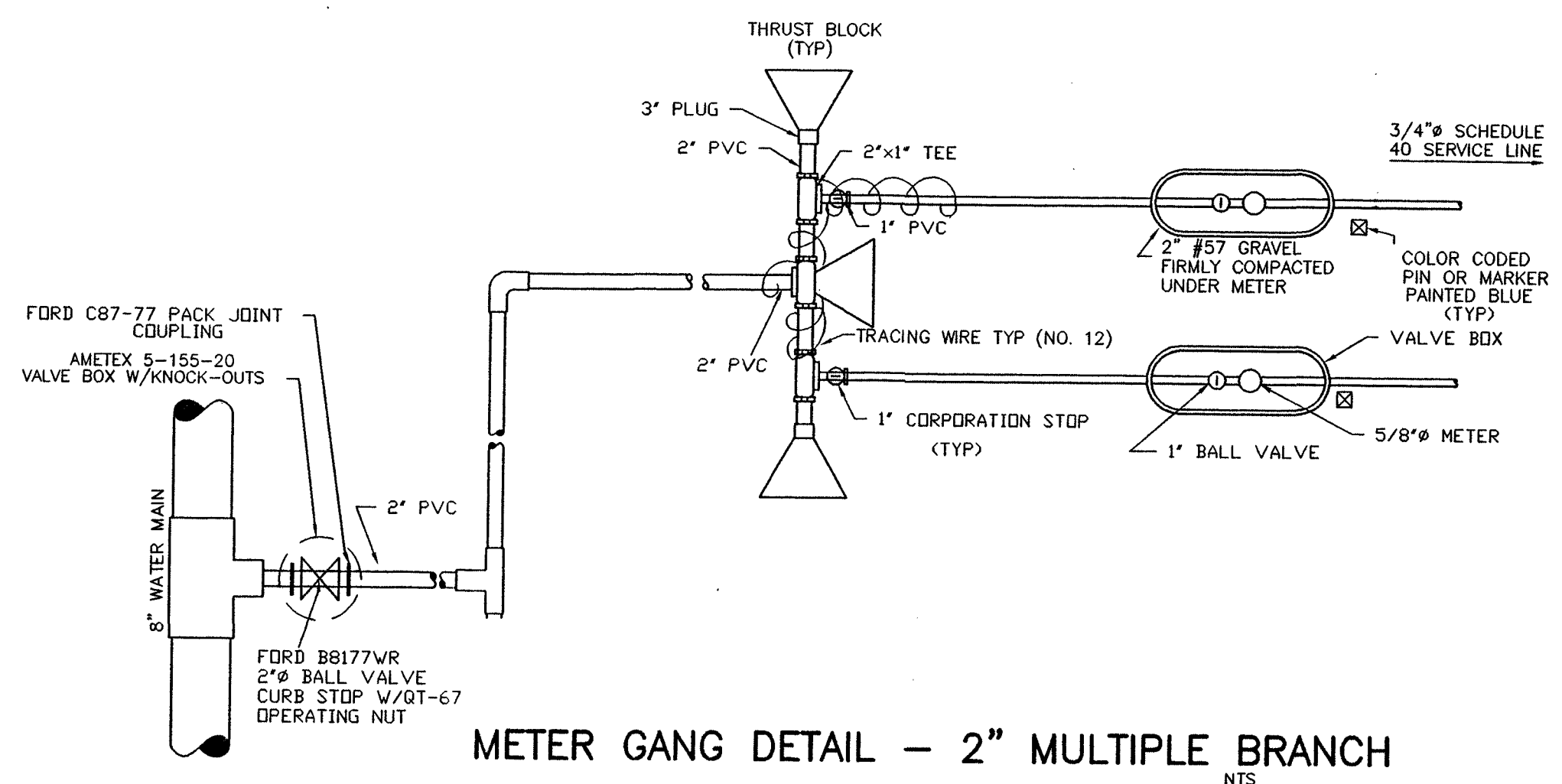
DRAWN BY: GPR
 DATE: 4-15-98
 JOB #: 98017
 CHECKED: RCP
 SCALE: AS SHOWN
 JOB FILE: 98017





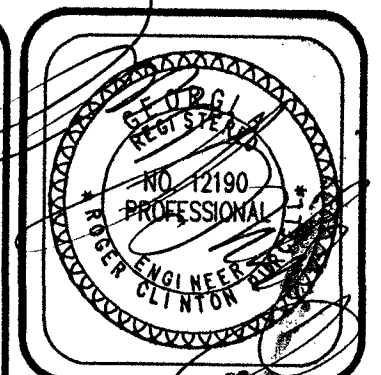
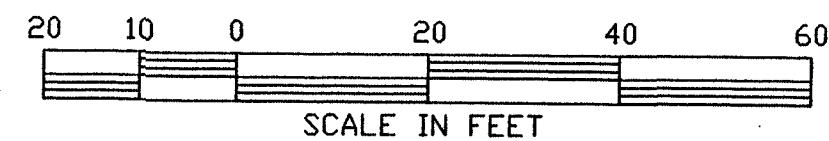
LEGEND:

- SITE:**
- LA. LANDSCAPE AREA
 - TC - TOP OF CURB(AT BACK)
 - EXISTING CURBLINE
 - PRO-CURB & GUTTER
 - PRO-HEADER CURB
 - BUILDING SETBACK LINE
 - EXISTING CONTOUR
 - 22--- PROPOSED CONTOUR
 - 22.3 EXISTING SPOT ELEVATION
 - + 22.3 PROPOSED SPOT ELEVATION
 - AISLE/ROAD
 - SLOPE DIRECTION ARROW
 - XX FENCE
 - MARSH LINE \ WETLAND LINE
 - UNDERGROUND ELECTRIC LINE
 - DRAINAGE DITCH / SWALE
 - CLEARING LIMITS
- UTILITY:**
- EXISTING SANITARY SEWER
 - PROPOSED SANITARY SEWER
 - UTILITY/OVERHEAD ELEC.
 - UG UTILITY/GAS LINE
 - PROPOSED UTILITY/GAS LINE
 - PROPOSED WATER
 - EXISTING WATER
 - UT TELEPHONE LINE
 - CLEAN OUT
 - SANITARY SEWER MH
 - FH - FIRE HYDRANT
 - GV - GATE VALVE
 - DBFP - DOUBLE CHECK BACKFLOW PREVENTOR
 - WM - WATER METER
 - SVC - SERVICE
 - CBV - CURB BALL VALVE
- EROSION CONTROL:**
- Ⓡ ROCK FILTER DAM
 - Ⓡ BUFFER
 - Ⓡ CONSTRUCTION EXIT / ENTRANCE
 - Ⓡ DIVERSION BERM PERM.
 - Ⓡ STORM OUTLET PROTECTION RIP RAP TO SQ YRDS OF 10-25 LB STONE
 - Ⓡ DISTURBED AREA STABILIZATION TEMPORARY SEEDING
 - Ⓡ DISTURBED AREA STABILIZATION PERMANENT SEEDING/LANDSCAPING
 - Ⓡ SEDIMENT BARRIER (TEMP)
 - SLOPE DIRECTION ARROW
- STORM DRAINAGE:**
- Ⓡ STORM DRAIN MH
 - Ⓡ FLARED END SECTION
 - Ⓡ PROPOSED GRATE INLET
 - Ⓡ EXISTING GRATE INLET
 - Ⓡ PROPOSED JUNCTION BOX / MH
 - Ⓡ EXISTING JUNCTION BOX / MH
 - EXISTING STORM DRAIN
 - PROPOSED STORM DRAIN



METER GANG DETAIL - 2" MULTIPLE BRANCH

SEE SHEET C-9 FOR ADDITIONAL DETAILS



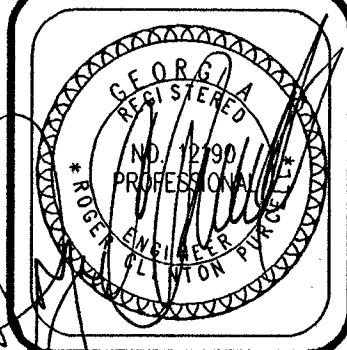
REVISIONS

| NO. | DATE | BY | DESCRIPTION |
|-----|------|-----|-------------------|
| 1 | CR | 5-4 | GLYNN CO COMMENTS |

UTILITY PLAN
ISLAND COTTAGE & BUSINESS CENTER
CIVIL DRAWINGS
GLYNN COUNTY GA.

PRUITT & PURCELL, P.C.
 CIVIL AND STRUCTURAL ENGINEERS
 SURVEYORS AND LAND PLANNERS
 STATE LICENSE NO. 2000-1000, 2000-1000, 2000-1000, 2000-1000

DRAWN BY GPR
DATE 4-15-98
JOB # 98017
CHECKED RCP
SCALE AS SHOWN
JOB FILE 98017



| NO. | BY | DATE |
|-----|----|------|
| | | |
| | | |
| | | |
| | | |
| | | |
| | | |
| | | |
| | | |
| | | |

SEDIMENT EROSION CONTROL PLAN
 ISLAND COTTAGE & BUSINESS CENTER
 CIVIL DRAWINGS
 GLYNN COUNTY GA.

PRUITT & PURCELL, P.C.
 CIVIL AND STRUCTURAL ENGINEERS
 SURVEYORS AND LAND PLANNERS
5181 COTTERESS HILL RD., BRUNSWICK, GA 31525 (912) 285-7058 (FAX) 285-4888

DRAWN BY GPR
 DATE 4-15-98
 JOB # 98017
 CHECKED RCP
 SCALE AS SHOWN
 JOB FILE 98017

C-7
 OF 10

LEGEND:

SITE:

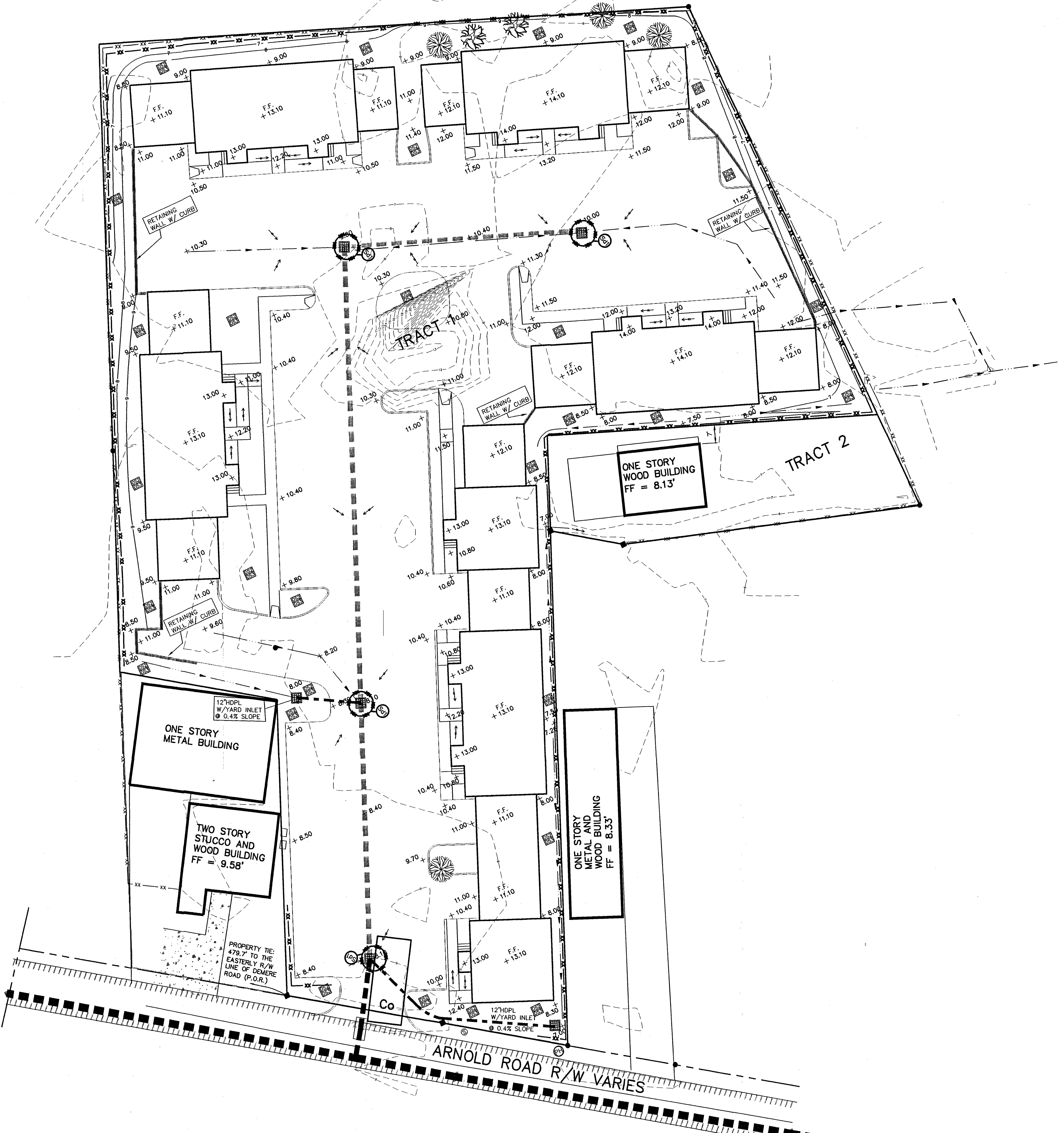
- LA. LANDSCAPE AREA
 - TC - TOP OF CURB(AT BACK)
 - EXISTING CURBLINE
 - PRO-CURB & GUTTER
 - PRO-HEADER CURB
 - BUILDING SETBACK LINE
 - - - EXISTING CONTOUR
 - - - PROPOSED CONTOUR
 - 23.3 EXISTING SPOT ELEVATION
 - + 22.3 PROPOSED SPOT ELEVATION
 - AISLE/ROAD
 - SLOPE DIRECTION ARROW
 - XX FENCE
 - MARSH LINE / WETLAND LINE
 - UNDERGROUND ELECTRIC LINE
 - DRAINAGE DITCH / SWALE
- UTILITY:**
- EXISTING SANITARY SEWER
 - PROPOSED SANITARY SEWER
 - UTILITY/OVERHEAD ELEC.
 - UG UTILITY/GAS LINE
 - UG PROPOSED UTILITY/GAS LINE
 - PROPOSED WATER
 - EXISTING WATER
 - UT TELEPHONE LINE
 - CO CLEAN OUT
 - SS SANITARY SEWER MH
 - FH - FIRE HYDRANT
 - GV - GATE VALVE
 - DBFP - DOUBLE CHECK BACKFLOW PREVENTOR
 - WM - WATER METER

EROSION CONTROL:

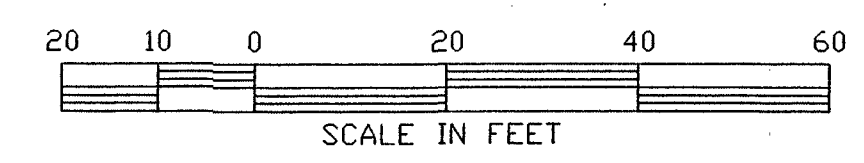
- RF ROCK FILTER DAM
- BF BUFFER
- CE CONSTRUCTION EXIT / ENTRANCE
- DB DIVERSION BERM PERM.
- SI STORM OUTLET PROTECTION
- DI RIP RAP 10 SQ YRDS OF 10-25 LB STONE
- DS1 TEMPORARY SEEDING
- DS2 DISTURBED AREA STABILIZATION PERMANENT SEEDING/LANDSCAPING
- DS3 DISTURBED AREA STABILIZATION PERMANENT SEEDING/LANDSCAPING
- SB1 SEDIMENT BARRIER (TEMP)
- SA SLOPE DIRECTION ARROW

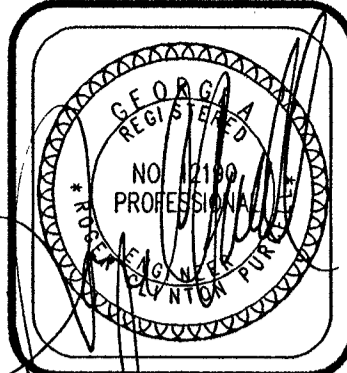
STORM DRAINAGE:

- SD STORM DRAIN MH
- FL FLARED END SECTION
- GI PROPOSED GRATE INLET
- GI EXISTING GRATE INLET
- SD PROPOSED JUNCTION BOX / MH
- SD EXISTING JUNCTION BOX / MH
- SD EXISTING STORM DRAIN
- SD PROPOSED STORM DRAIN



CALL BEFORE YOU DIG: 1-800-282-7411.
 UTILITIES PROTECTION CENTER
CALL 1-800-282-7411 AT LEAST 72 HOURS BEFORE YOU DIG TO BE IN FULL COMPLIANCE WITH THE LAW.





| NO. | BY | DATE |
|-----|----|------|
| | | |
| | | |
| | | |
| | | |

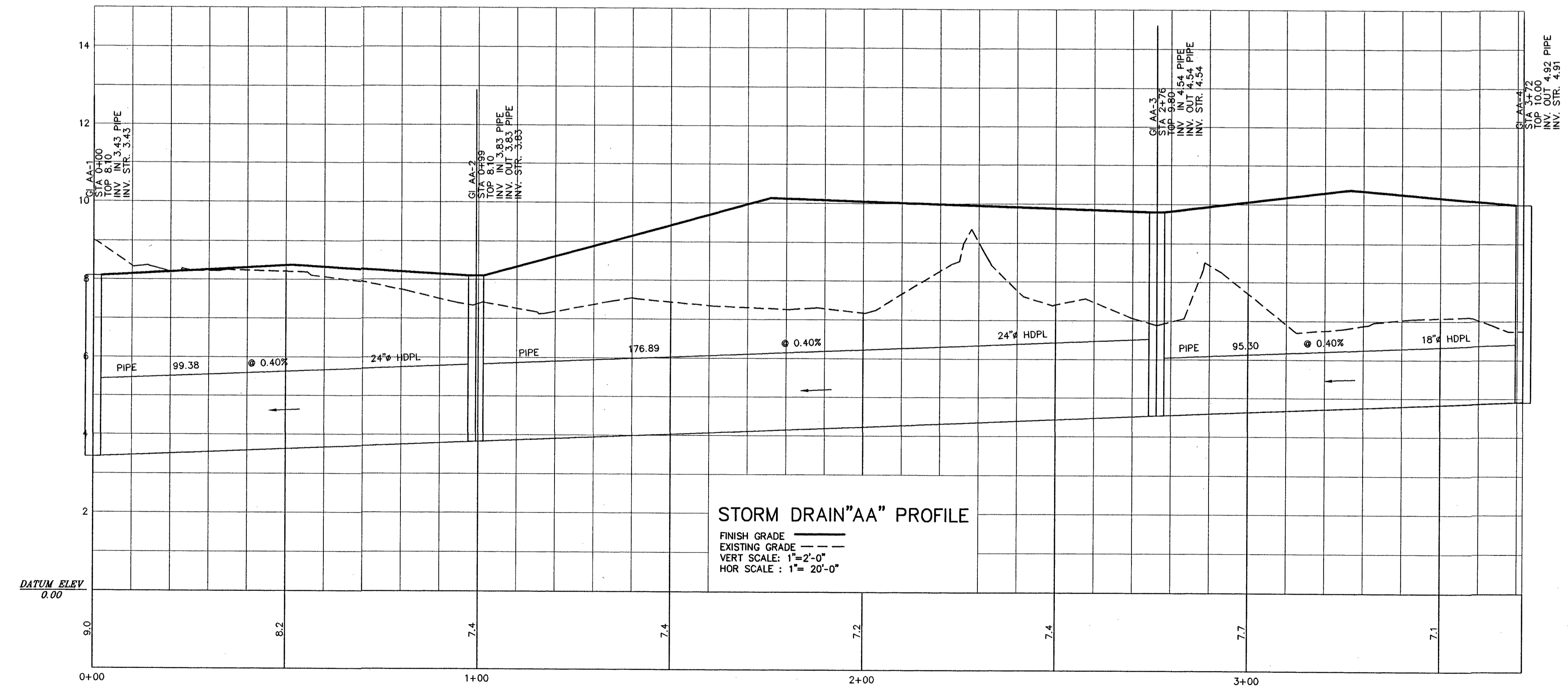
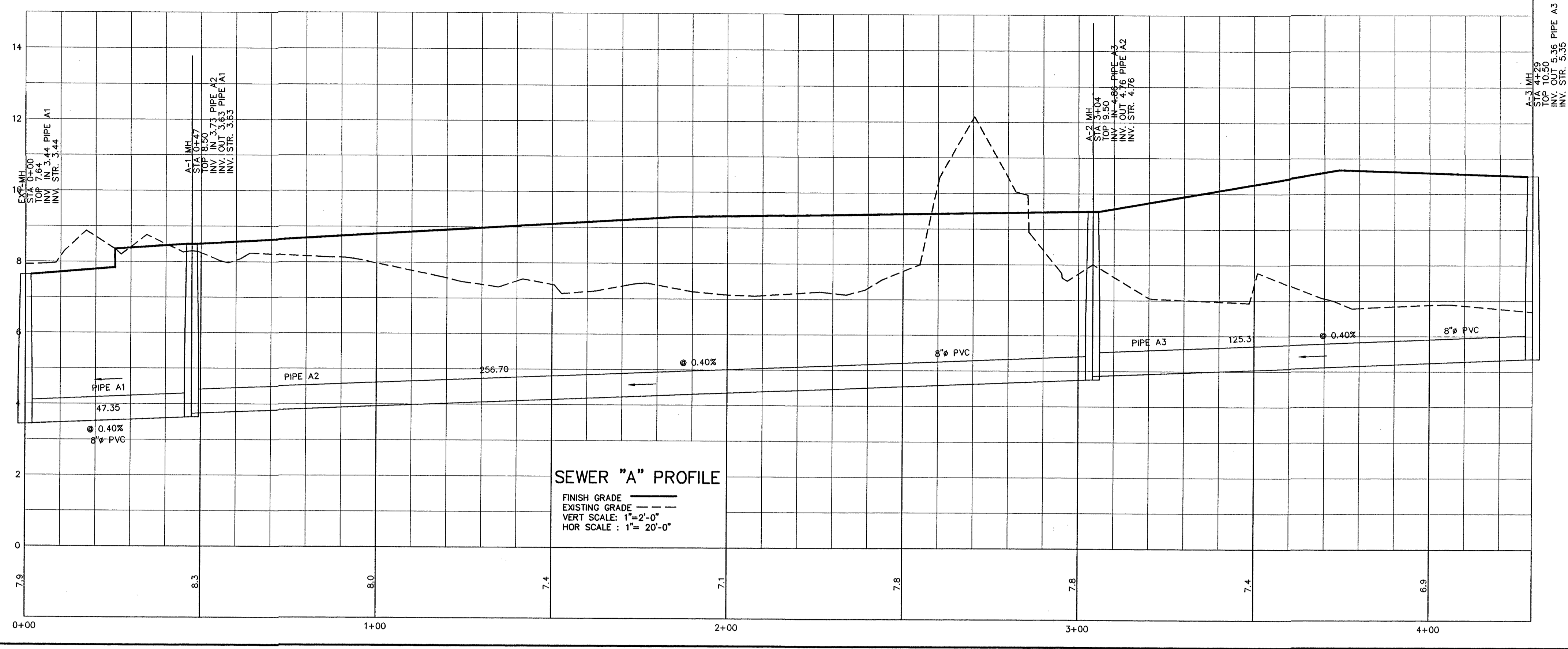
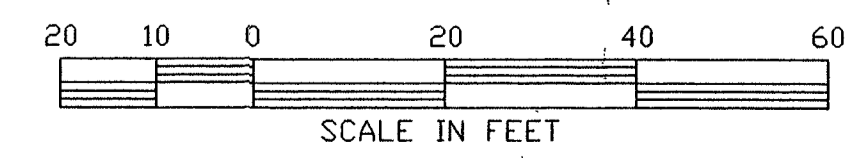
PROFILES
ISLAND COTTAGE & BUSINESS CENTER
CIVIL DRAWINGS
GLYNN COUNTY, GA.

PRUITT & PURCELL, P.C.
 CIVIL AND STRUCTURAL ENGINEERS
 SURVEYORS AND LAND PLANNERS
3811 CYPRESS WOOD RD., BRUNSWICK, GA 31525 (912) 295-7638 (FAX) 295-4896

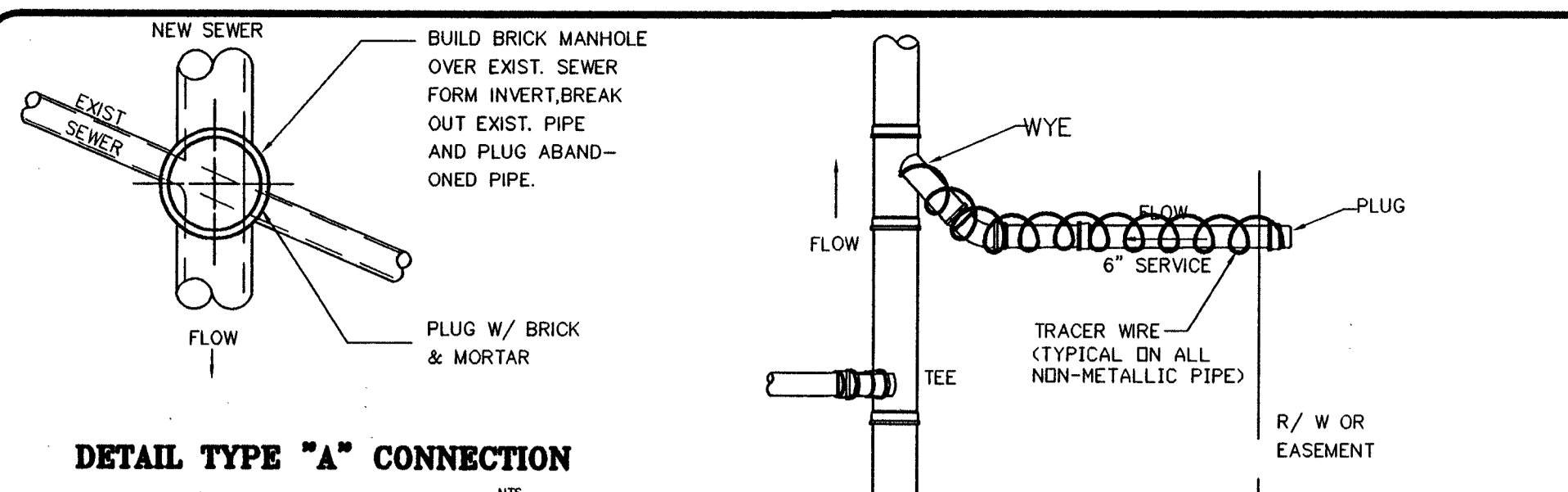
DRAWN BY: GPR
 DATE: 4-15-98
 JOB #: 98017
 CHECKED: RCP
 SCALE: AS SHOWN
 JOB FILE: 98017

C-8
 OF 10

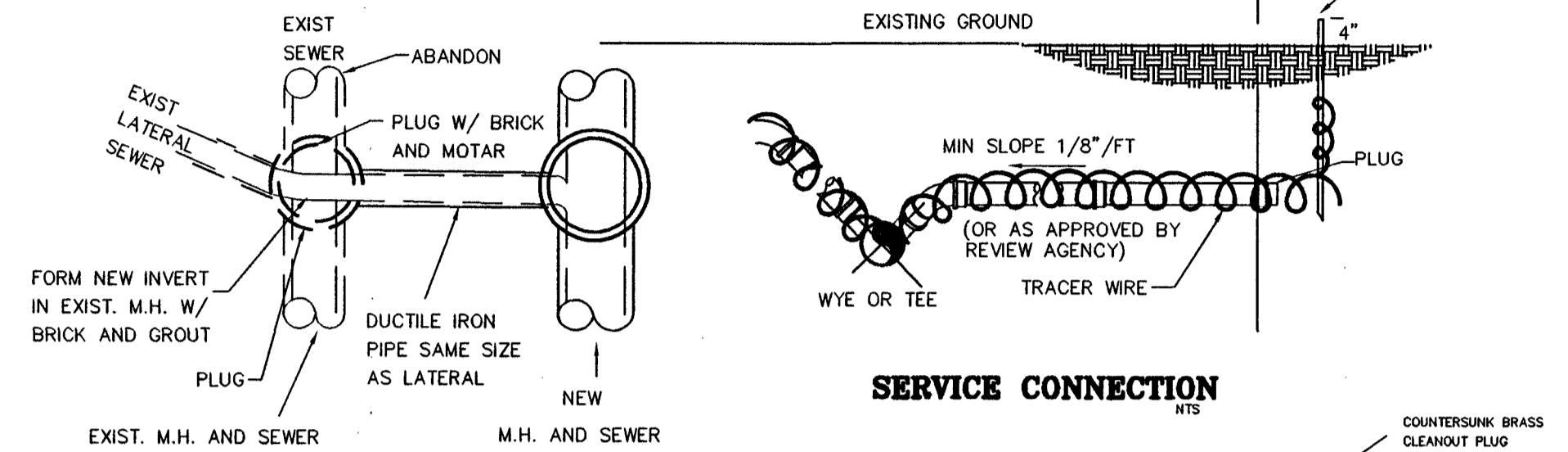
CALL BEFORE YOU DIG: 1-800-282-7411.
 UTILITIES PROTECTION CENTER
CALL 1-800-282-7411 AT LEAST 72 HOURS BEFORE YOU DIG TO BE IN FULL COMPLIANCE WITH THE LAW.



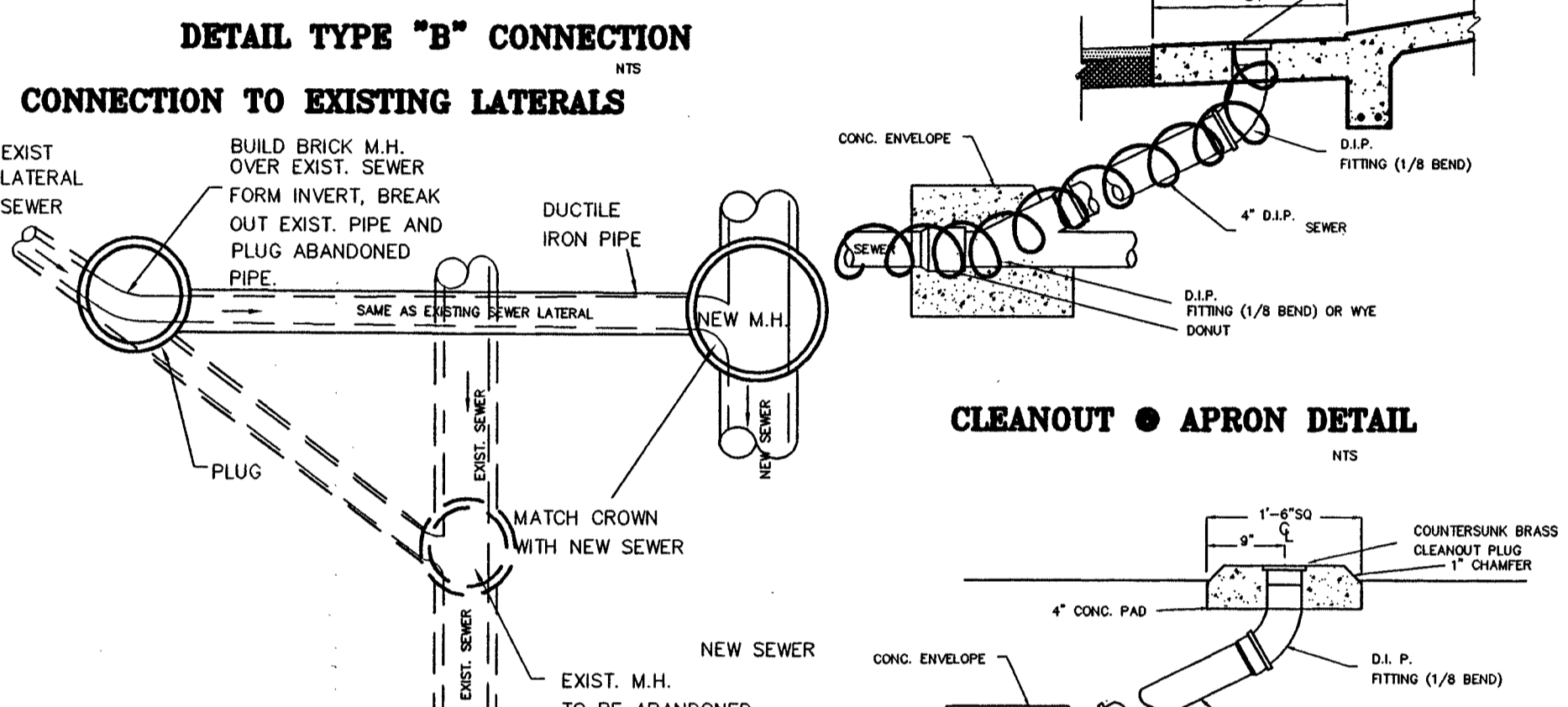
DATUM ELEV.
0.00



DETAIL TYPE "A" CONNECTION
NTS



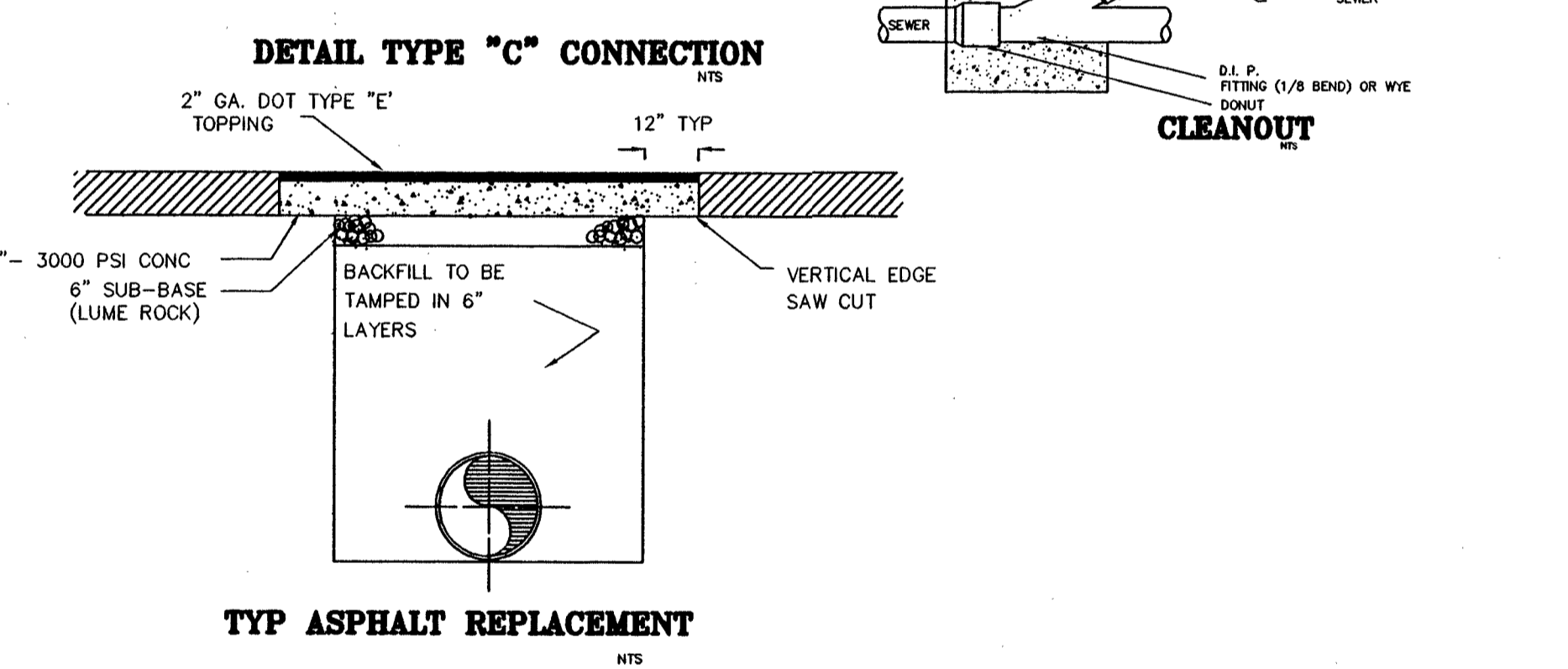
SERVICE CONNECTION
NTS



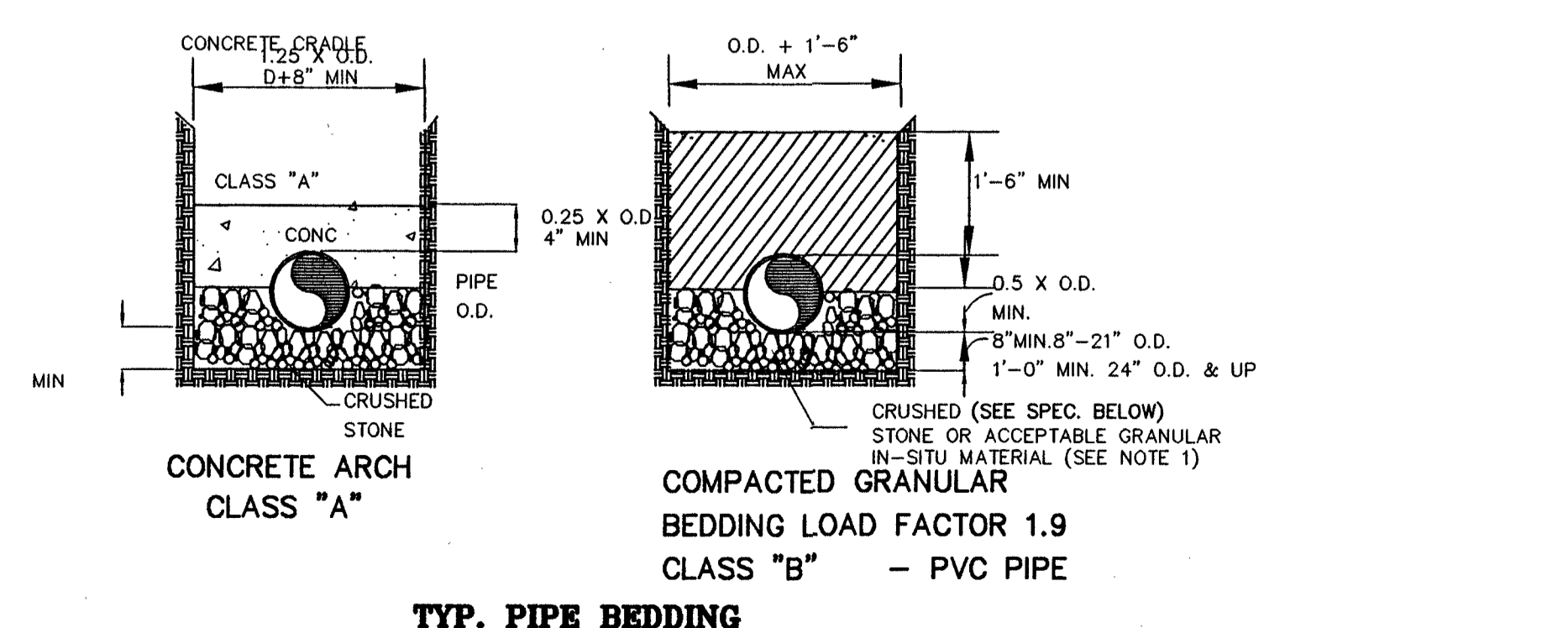
DETAIL TYPE "B" CONNECTION
NTS

CONNECTION TO EXISTING LATERALS
NTS

CLEANOUT & APRON DETAIL
NTS

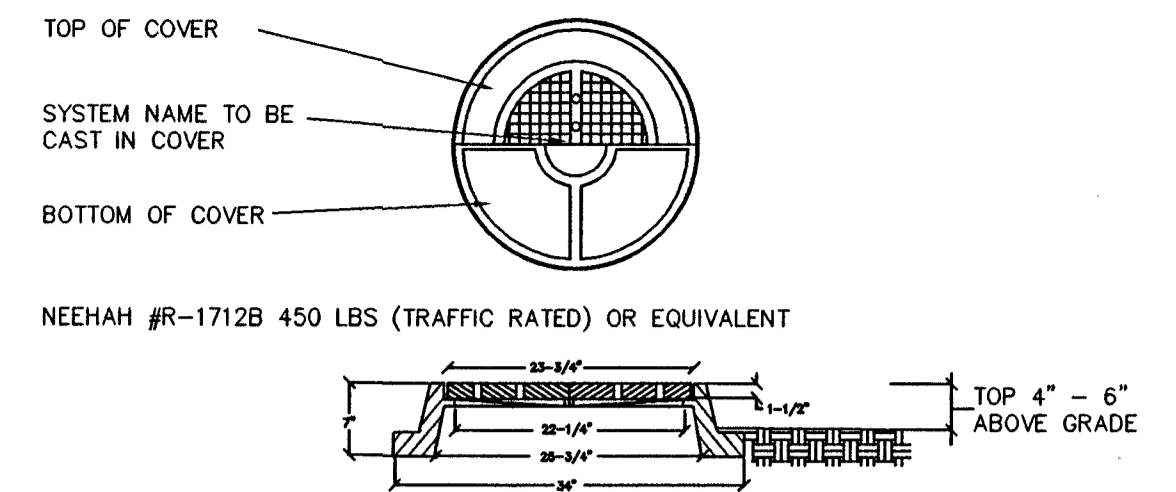


TYP ASPHALT REPLACEMENT
NTS



TYP. PIPE BEDDING

NOTES:
1. AS A MINIMUM THE BEDDING MATERIAL FOR CLASS "B" SHALL MEET THE REQUIREMENTS OF ASTM D2321 CLASS III.
2. CRUSHED STONE: # 57 PER GA. D.O.T. SPECIFICATION 800.01.
3. INSTALLATION METHODS FOR PIPING SHALL MEET THE REQUIREMENTS OF ASTM D2321.



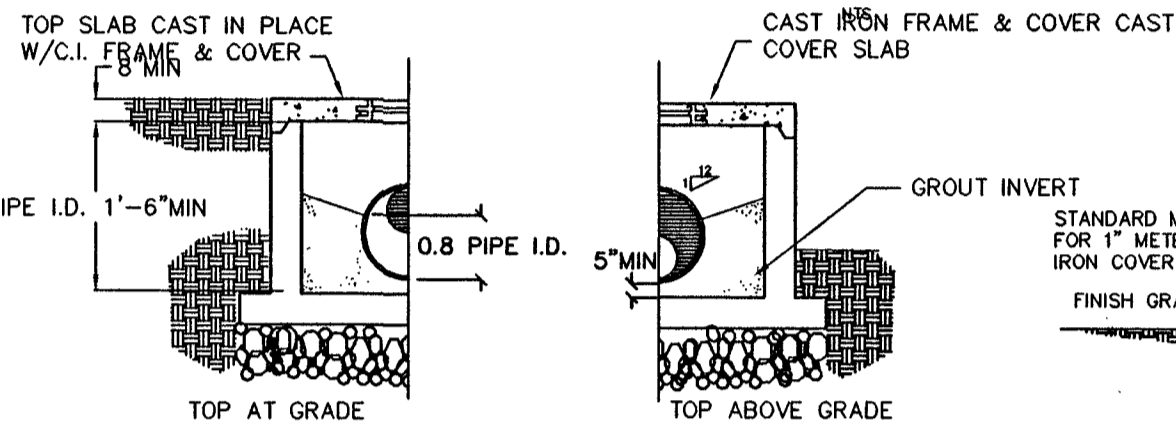
NOTE: CASTINGS SHALL BE OF UNIFORM QUALITY, FREE FROM BLOWHOLES, POROSITY, HARD SPOTS, SHRINKAGE DISTORTION OR OTHER DEFECTS. THEY SHALL BE SMOOTH AND WELL CLEANED BY SHOTBLASTING OR BY SOME OTHER APPROVED METHOD, UNLESS AN ALTERNATIVE SPECIFICATION IS MADE, THEY SHALL BE COATED W/ ASPHALT PAINT WHICH SHALL RESULT IN A SMOOTH COATING, TOUGH AND TENACIOUS WHEN COLD, NOT TACKY OR BRITTLE.

MATERIALS USED IN THE MANUFACTURE OF CASTINGS SHALL CONFORM TO ASTM ASSHO, ASA, MIL, AMS OR FEDERAL SPECIFICATIONS FOR GREY IRON OR DUCTILE IRON, AS FOLLOWS: GRAY IRON ASTM CLASS 30, DUCTILE IRON GRADE 60-40-18.

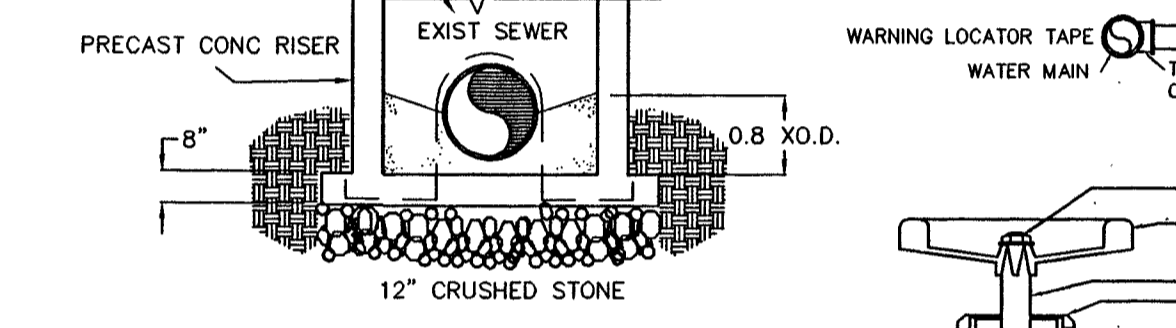
ALL CASTINGS SHALL BE MANUFACTURED TRUE TO PATTERN; COMPONENT PARTS SHALL FIT TOGETHER IN A SATISFACTORY MANNER ROUND FRAMES AND COVERS SHALL BE OF NON-ROCKING DESIGN OR SHALL HAVE MACHINED BEARING SURFACES TO PREVENT ROCKING AND RATTLING UNDER TRAFFIC.

ALL WEIGHTS GIVEN ARE AVERAGE (AND APPROXIMATE) VALUES. DEVIATIONS SHALL NOT EXCEED TOLERANCES PERMITTED BY ASTM STANDARDS.

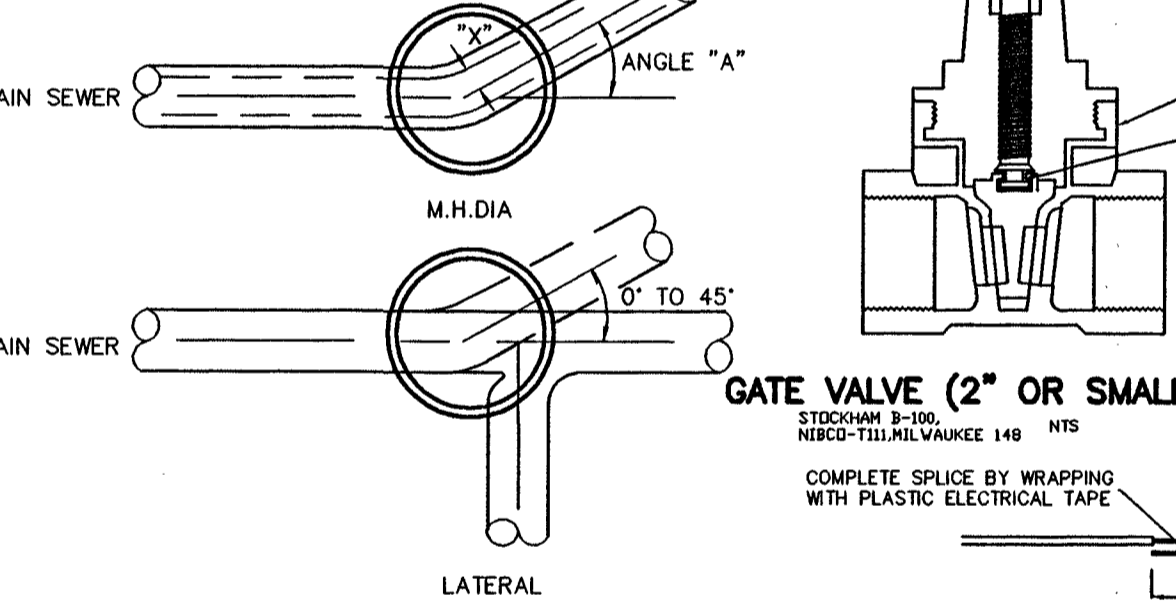
MANHOLE COVER AND FRAME DETAIL



SHALLOW MANHOLE
NTS



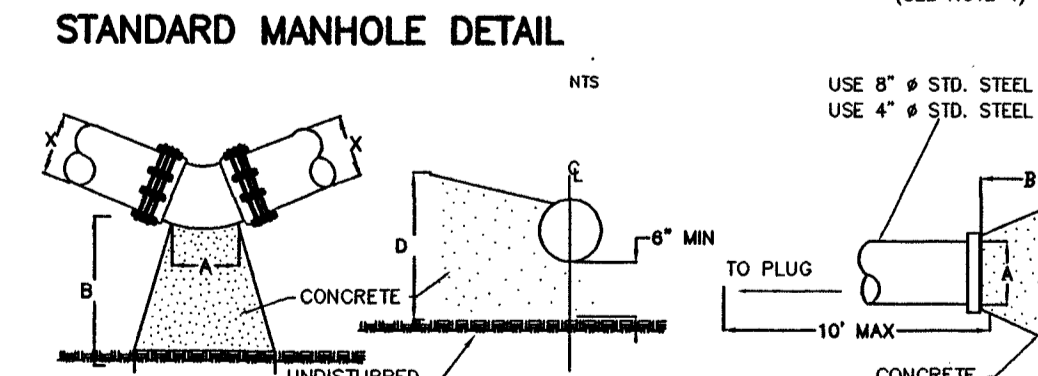
PRECAST M.H. OVER EXIST SEWER
NTS



GATE VALVE (2" OR SMALLER)
NTS

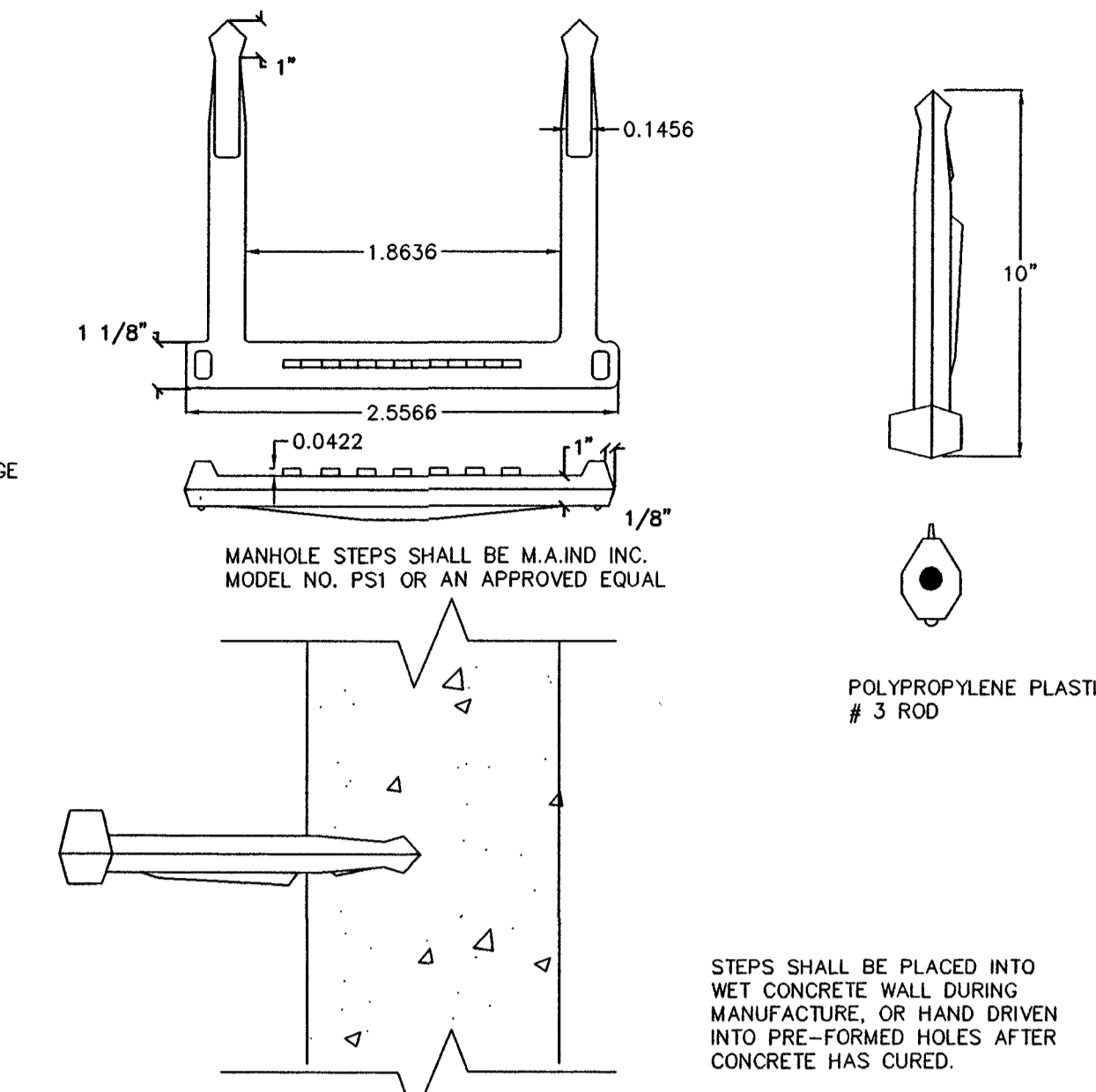
| PIPE SIZE | ANGLE "A" | M.H. DIA. | OFFSET "X" |
|------------|------------|-----------|------------|
| 8" TO 15" | 0° TO 90° | 4'-0" | 0" |
| 18" TO 24" | 0° TO 60° | 4'-0" | 0" |
| 18" TO 24" | 60° TO 90° | 5'-0" | 0" |
| 27" TO 30" | 0° TO 30° | 5'-0" | 0" |
| 27" TO 30" | 30° TO 60° | 5'-0" | 6" |
| 27" TO 30" | 60° TO 90° | 6'-0" | 8" |
| 36" | 0° TO 90° | 6'-0" | 0" |
| 42" | 0° TO 60° | 6'-0" | 0" |
| 48" | 0° TO 30° | 6'-0" | 6" |

NOTE: MINIMUM CIRCULAR RADIUS OF M.H. INVERT = 1.5 X PIPE DIAMETER

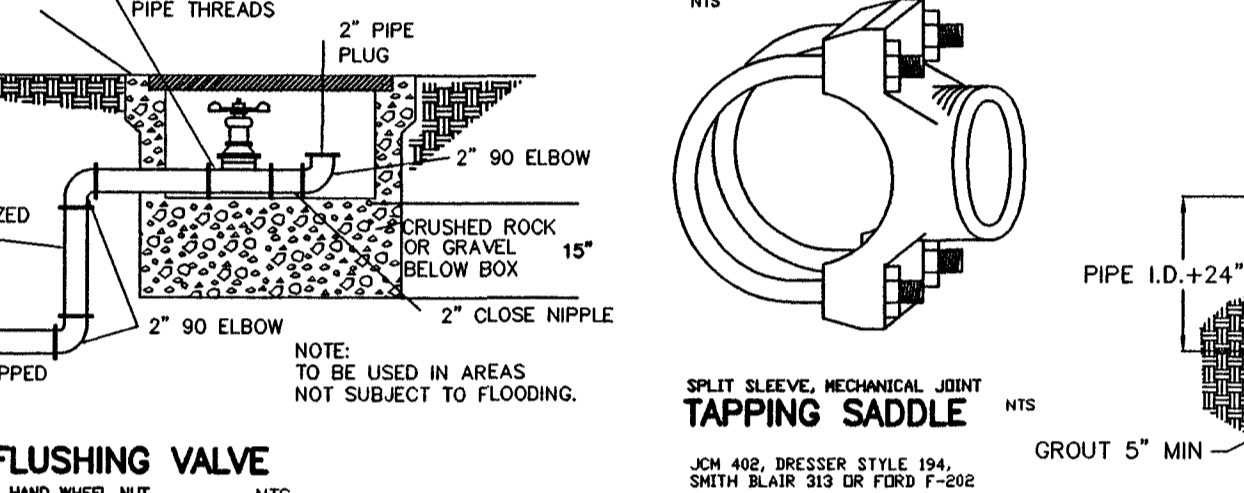


STANDARD MANHOLE DETAIL
NTS

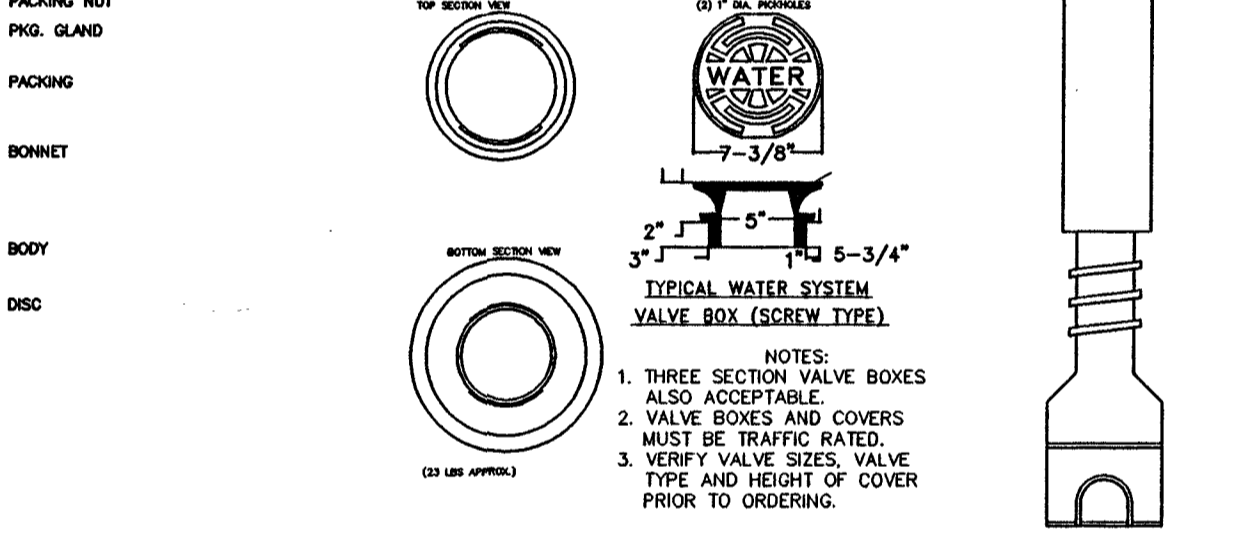
| 1/2" BEND (12") | BEND | | | | 1/8" BEND (6") | BEND | | | | TEES & DEAD ENDS | | | | |
|-----------------|------|-----|-----|-----|----------------|------|-----|-----|-----|------------------|-----|-----|-----|-----|
| | A | B | C | D | | A | B | C | D | | | | | |
| 8" | 10" | 12" | 14" | 16" | 8" | 10" | 12" | 14" | 16" | 8" | 10" | 12" | 14" | 16" |



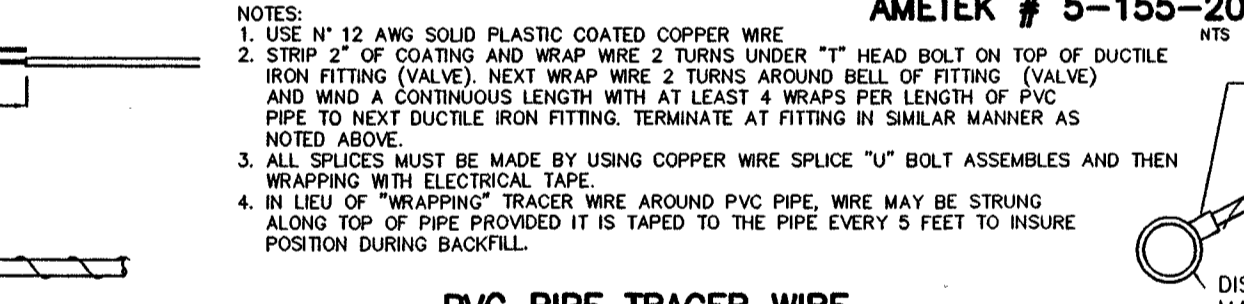
MANHOLE STEP DETAIL
NTS



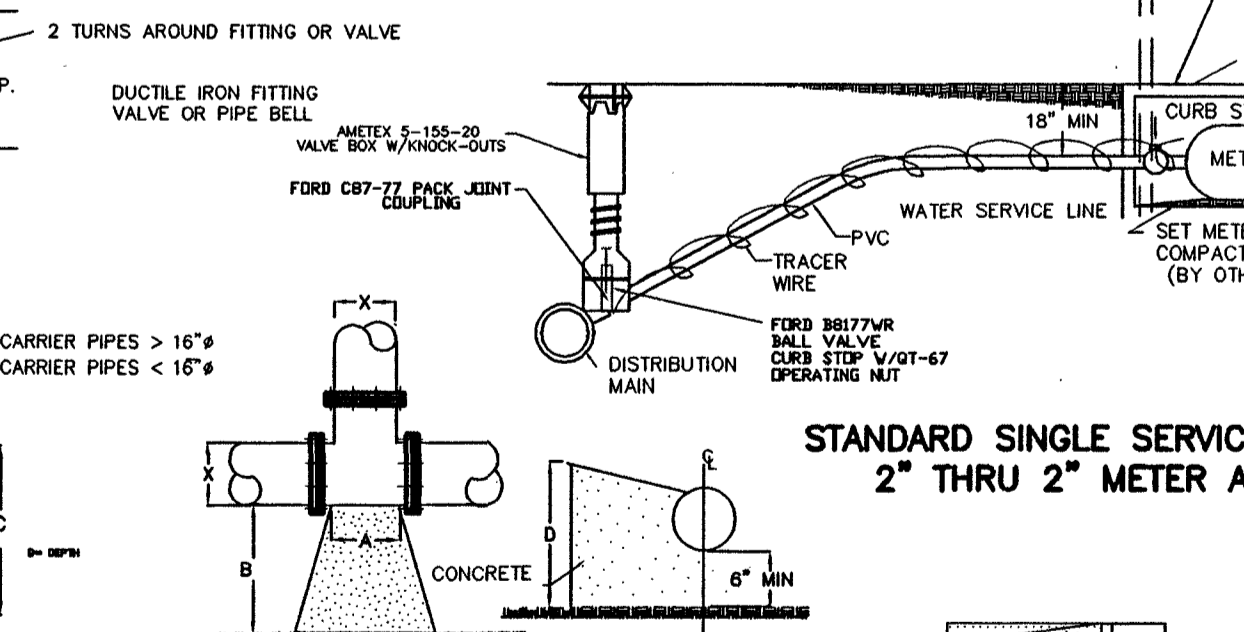
FLUSHING VALVE
NTS



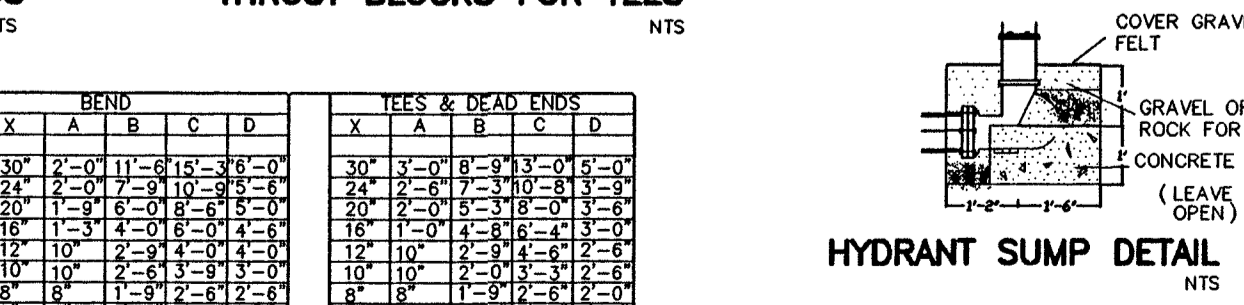
POLYIRON VALVE BOX AMETEK # 5-155-20
NTS



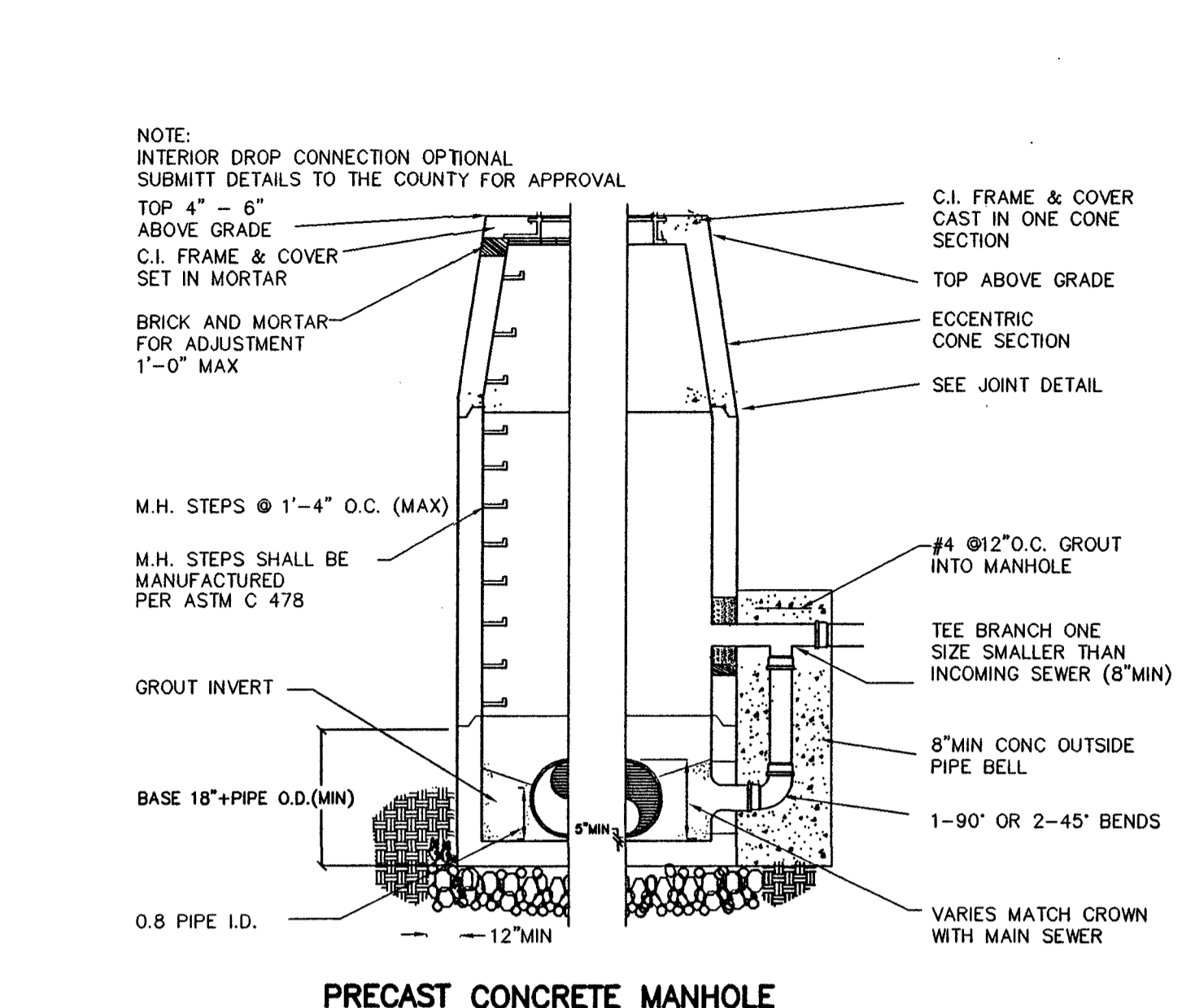
PVC PIPE TRACER WIRE
NTS



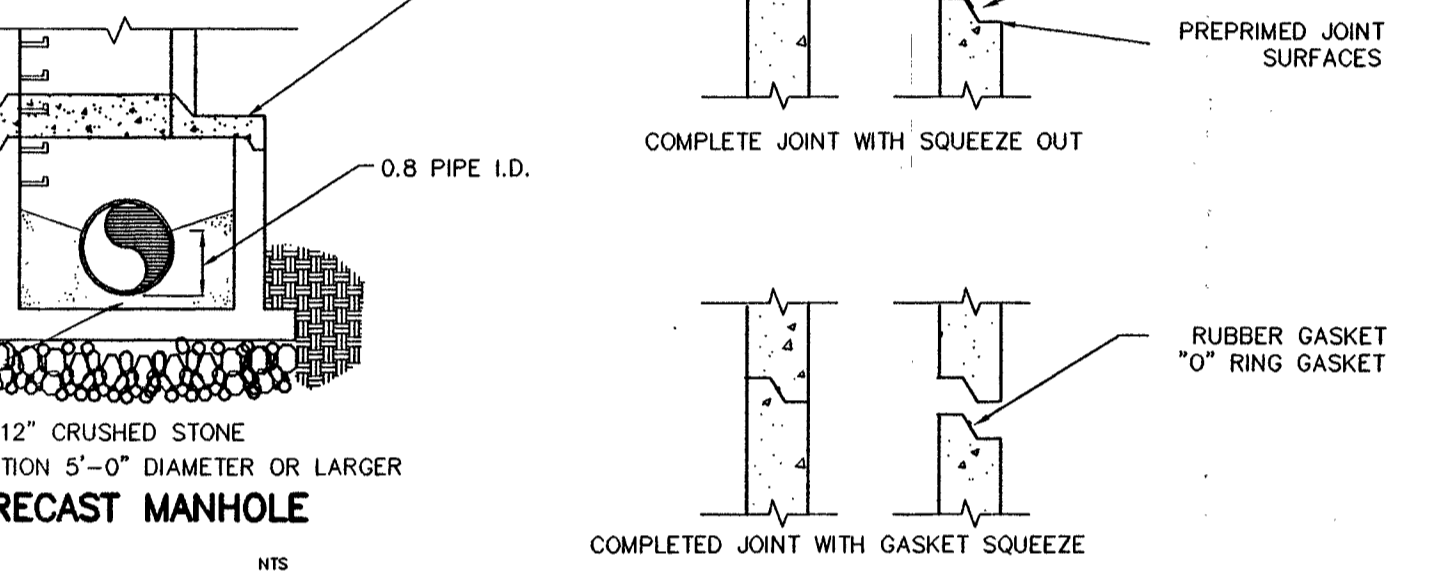
STANDARD SINGLE SERVICE CONNECTION 2" THRU 2" METER AND BOX
NTS



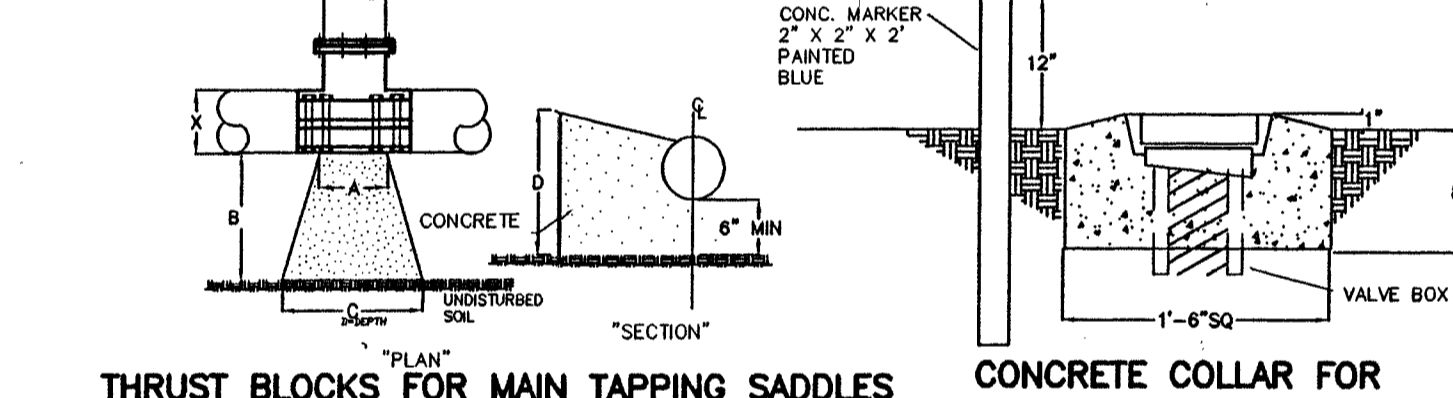
HYDRANT SUMP DETAIL
NTS



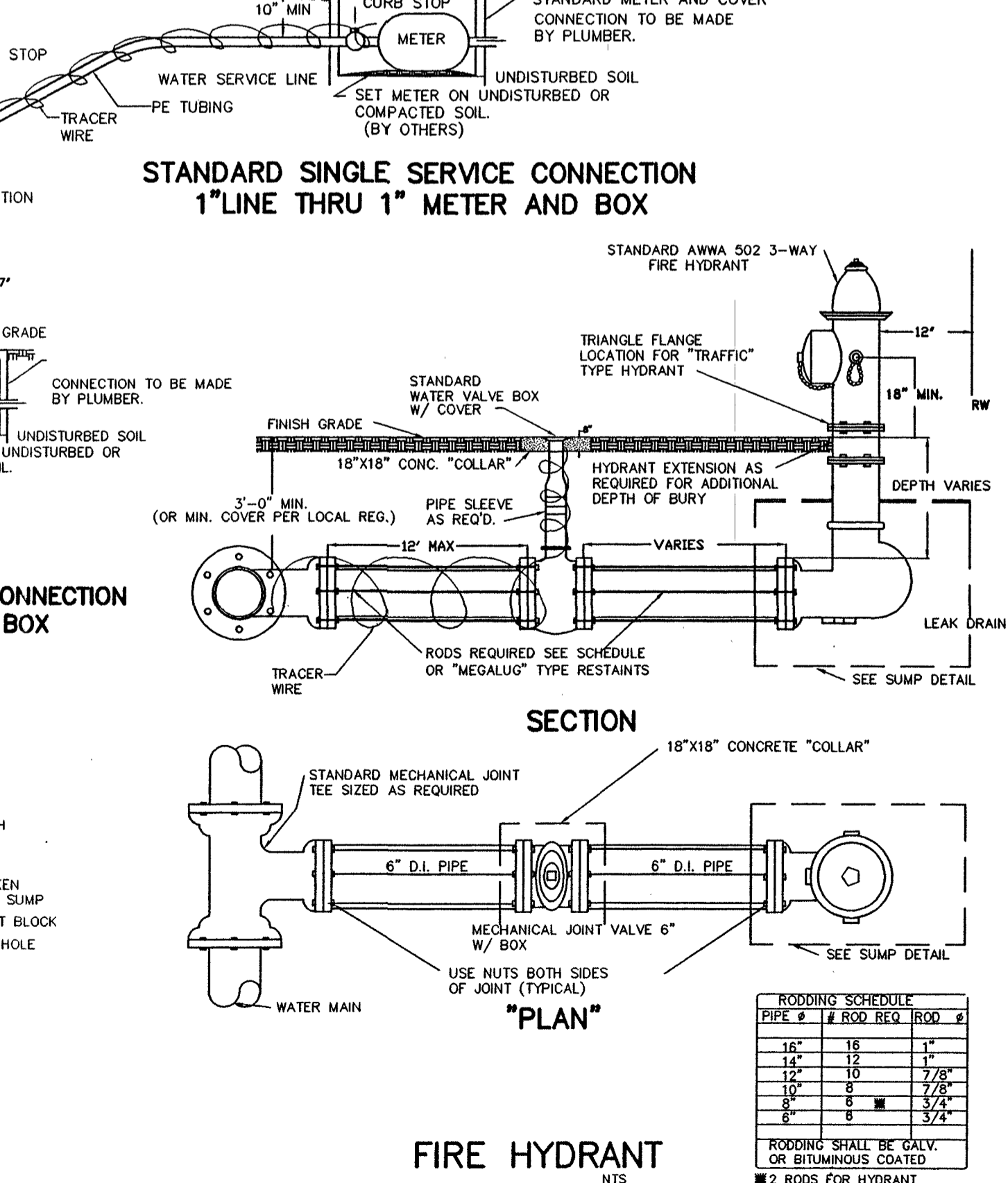
PRECAST CONCRETE MANHOLE
NTS



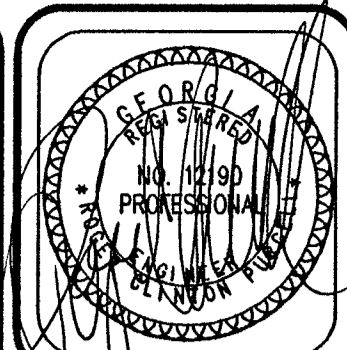
CONCRETE COLLAR FOR UNDER GROUND VALVE BOX
NTS



STANDARD SINGLE SERVICE CONNECTION 1" LINE THRU 1" METER AND BOX
NTS



FIRE HYDRANT
NTS



| NO. | BY | DATE |
|-----|----|------|
| | | |
| | | |
| | | |
| | | |
| | | |

WATER & SEWER DETAILS

ISLAND COTTAGE & BUSINESS CENTER
GLYNN COUNTY, GA.

PURCELL & PURCELL, P.C.

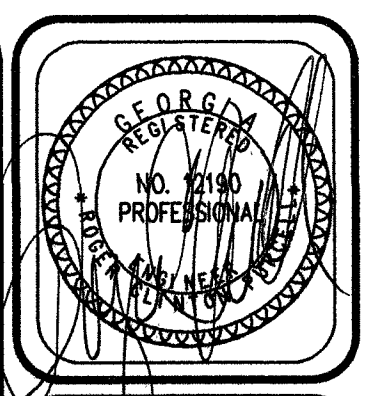
CIVIL AND STRUCTURAL ENGINEERS
SURVEYORS AND LAND PLANNERS

STATE OFFICES: 1425 E. HIGHWAY 44, SUITE 200, BEAUFORT, N.C. 28516 (919) 338-7008 (FAX) 338-4068

DRAWN BY: GPR
DATE: 4-15-98
JOB #: 98017
CHECKED: RCP
SCALE: AS SHOWN
JOB FILE: 98017

CALL BEFORE YOU DIG: 1-800-282-7411.

UTILITIES PROTECTION CENTER
CALL 1-800-282-7411 AT LEAST 72 HOURS BEFORE YOU DO TO BE IN FULL COMPLIANCE WITH THE LAW.



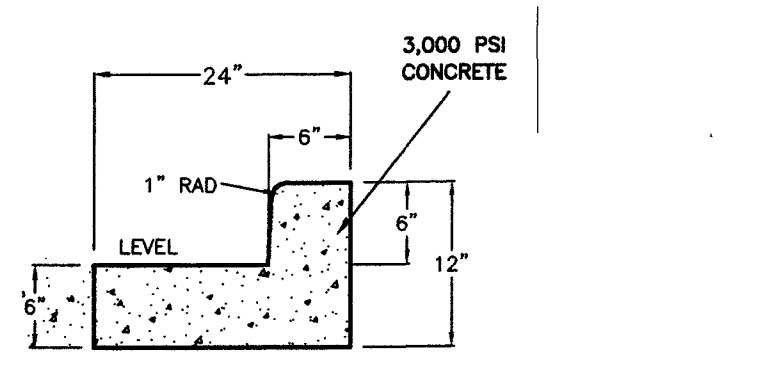
| NO. | BY | DATE |
|-----|----|------|
| | | |
| | | |
| | | |
| | | |

CIVIL DETAILS
 ISLAND COTTAGE & BUSINESS CENTER
 CIVIL DRAWINGS
 GLYNN COUNTY GA.

PRUITT & PURCELL, P.C.
 CIVIL AND STRUCTURAL ENGINEERS
 SURVEYORS AND LAND PLANNERS
 316 CYPRESS HILL RD., BRUNSWICK, GA 31525 (912) 260-7958 (FAX) 260-4808

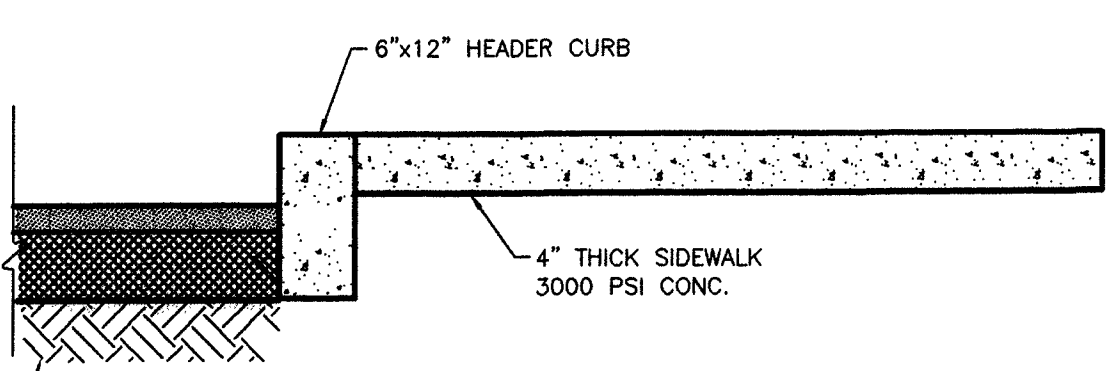
DRAWN BY: GPR
 DATE: 4-15-98
 JOB #: 98017
 CHECKED: RCP
 SCALE: AS SHOWN
 JOB FILE: 98017

C-10
 OF 10



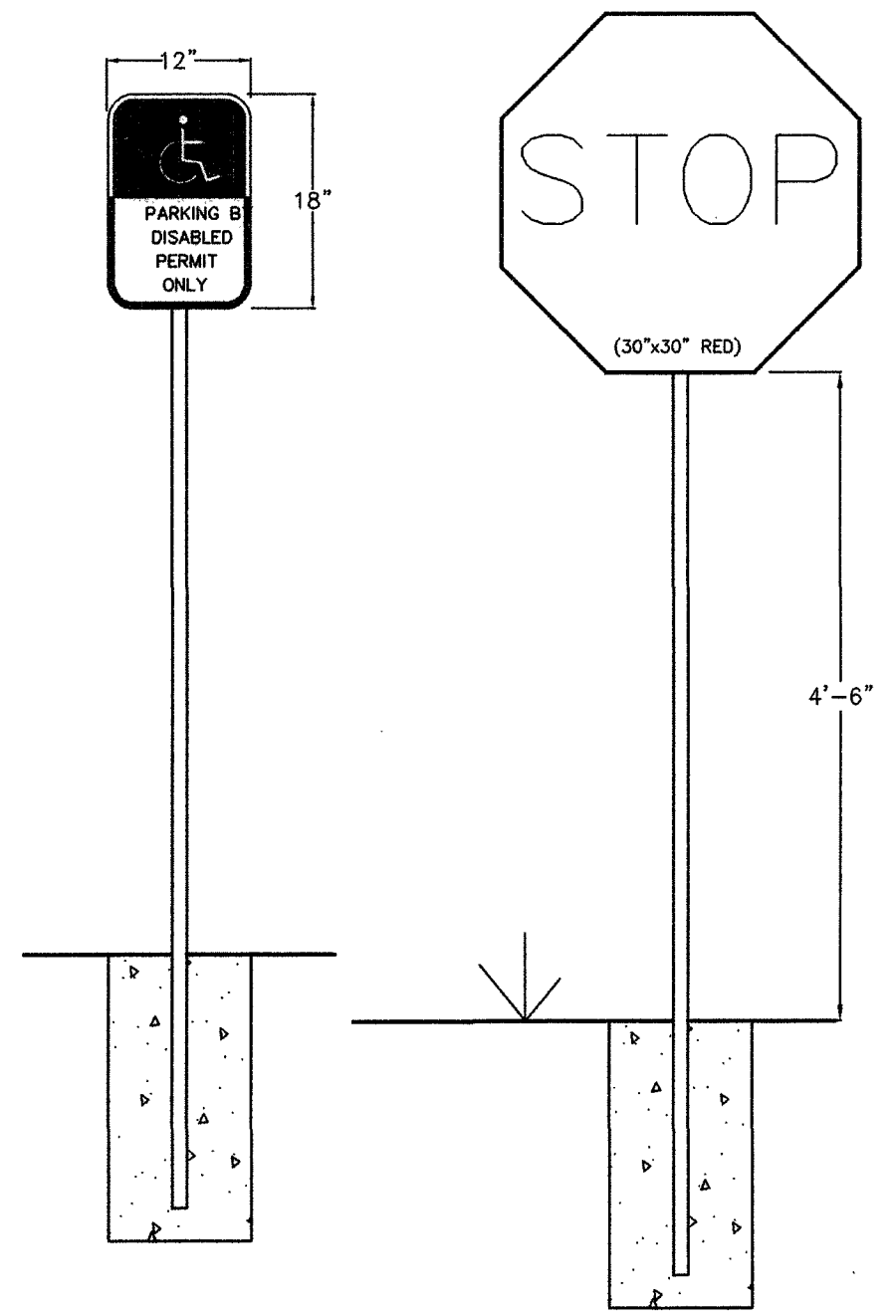
STANDARD CONCRETE CURB & GUTTER (TYPE '2')

TRANSVERSE JOINTS:
 CONTROL JOINTS - MIN 20' C/C
 EXPANSION JOINTS - 100' C/C

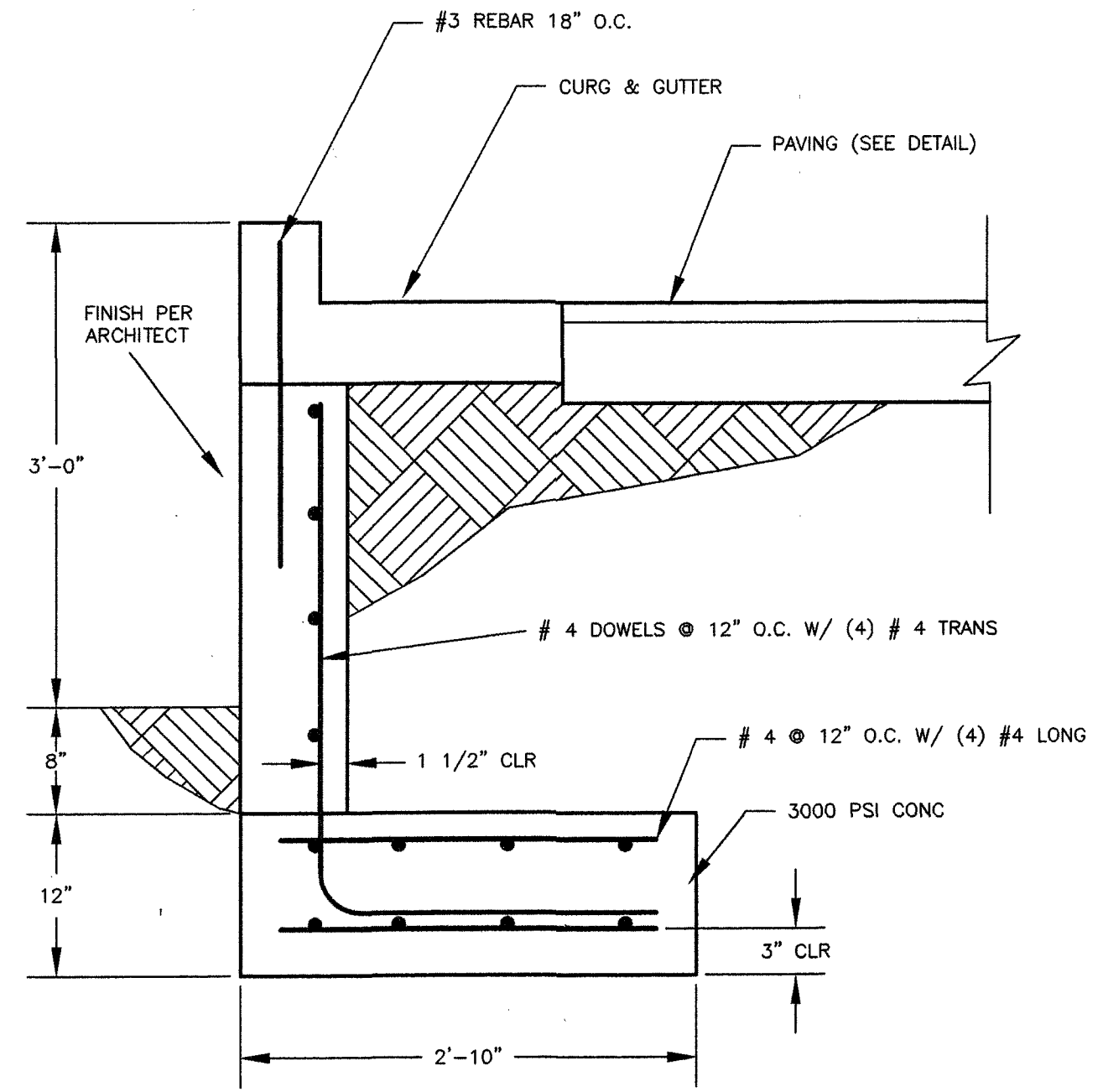


HEADER CURB DETAIL

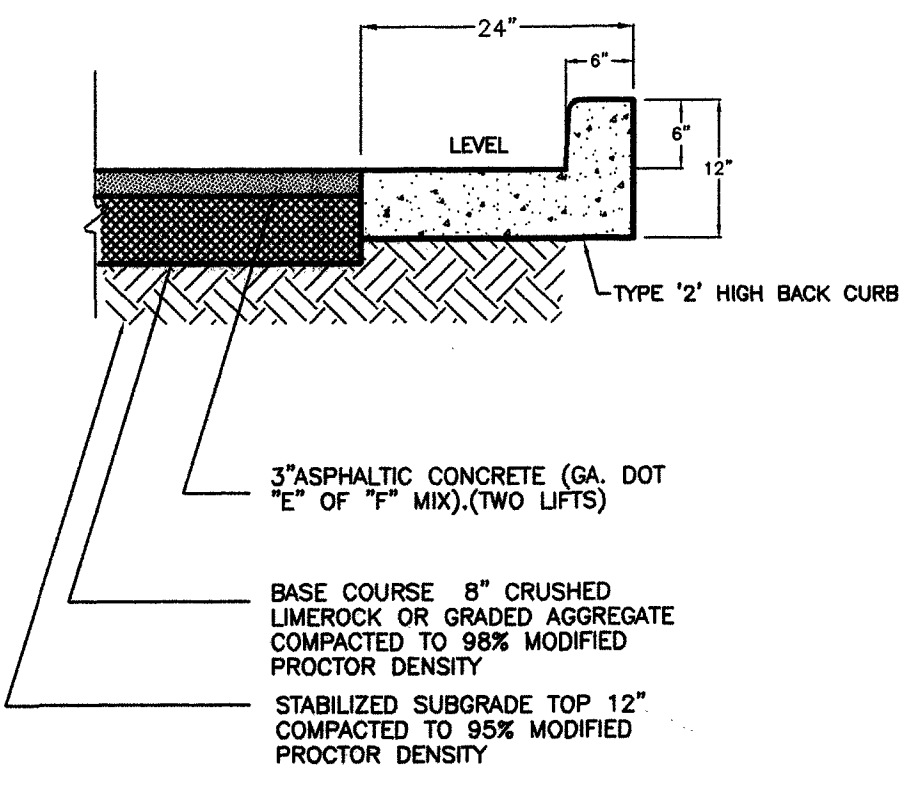
TRANSVERSE JOINTS:
 CONTROL JOINTS - MIN 20' C/C
 EXPANSION JOINTS - 100' C/C



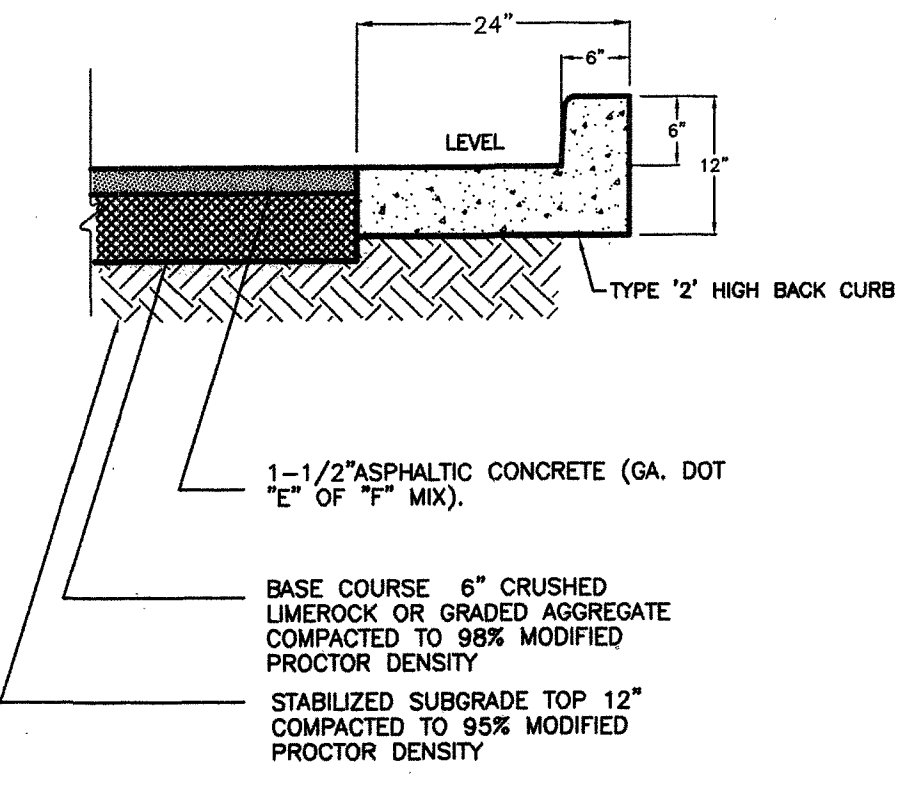
SIGN DETAILS



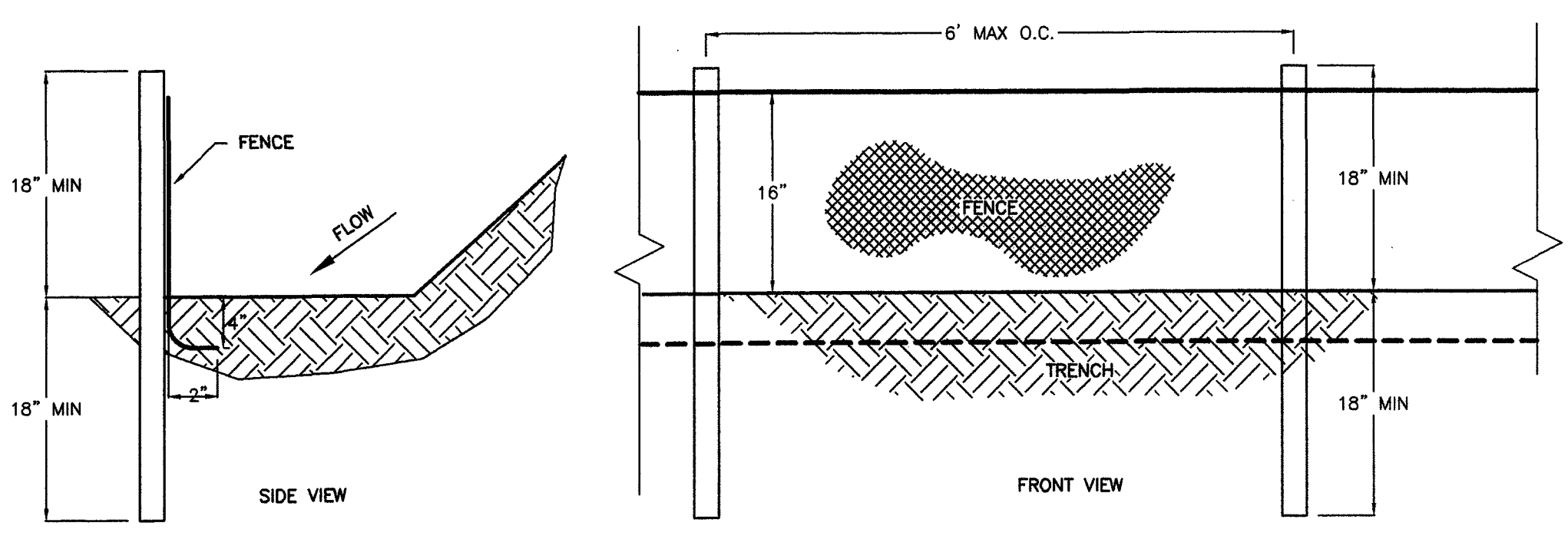
CURB DETAIL AT RETAINING WALL



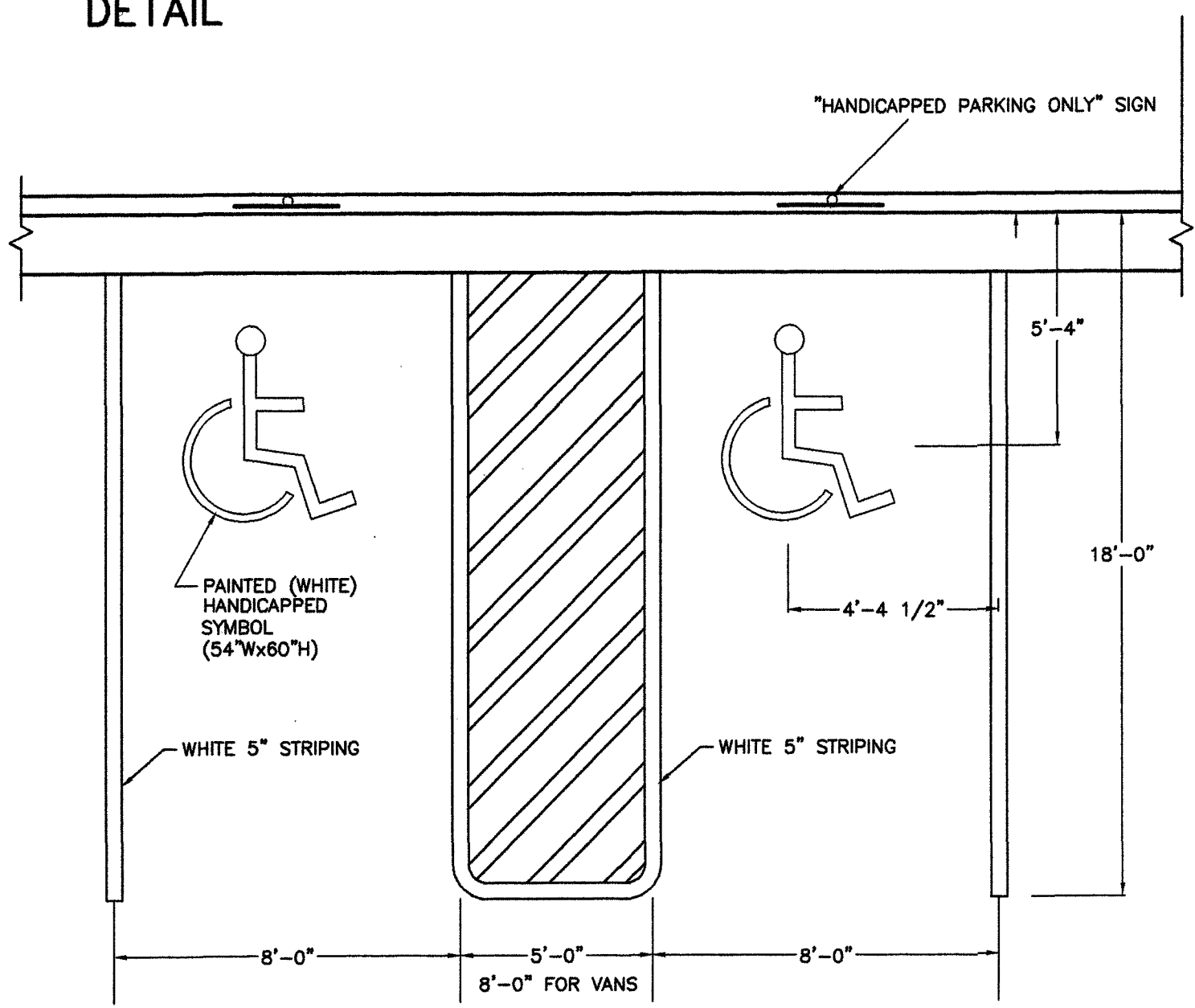
HEAVY PAVEMENT (TRUCK TRAFFIC) DETAIL



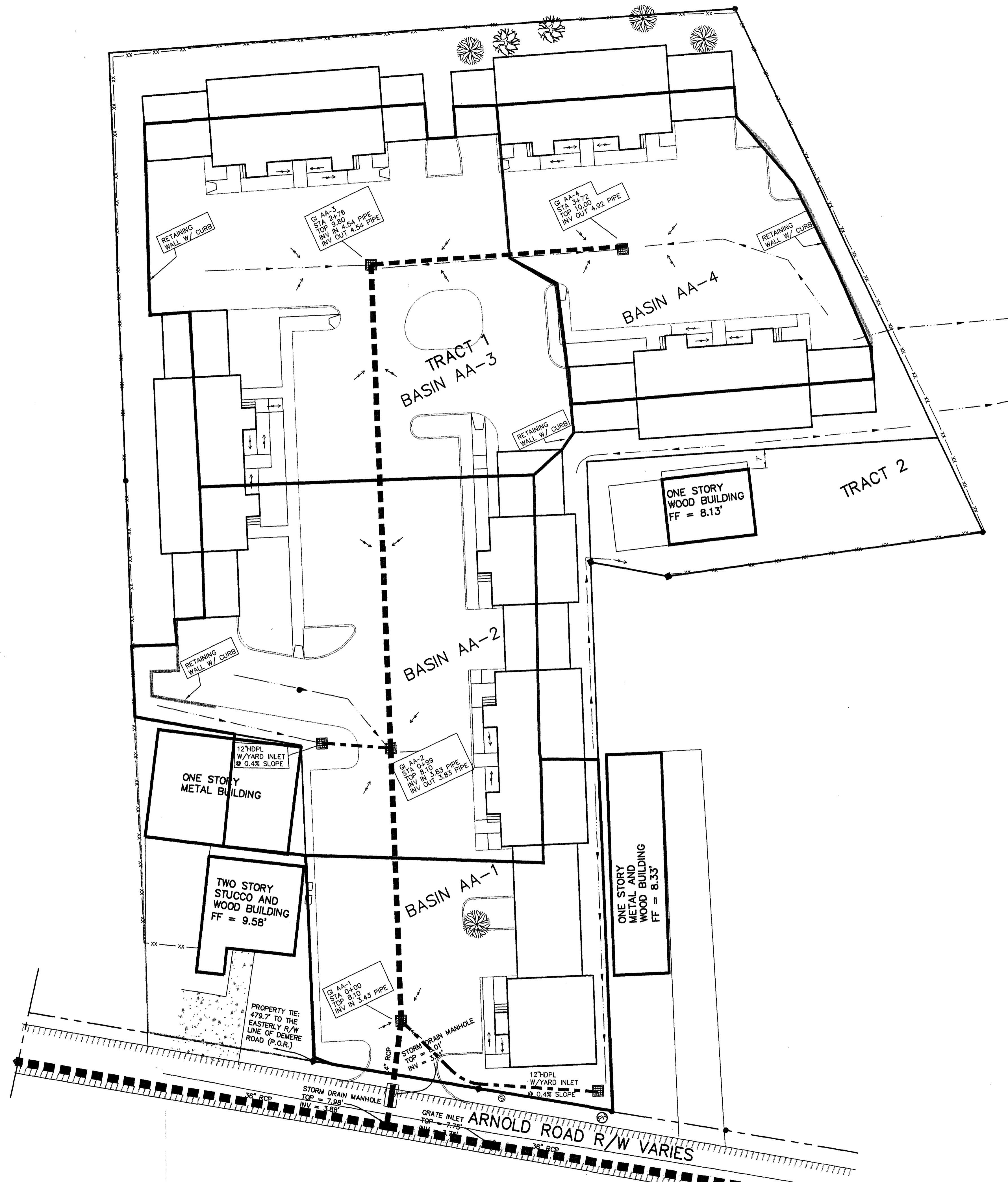
STANDARD PAVEMENT (PARKING ONLY) DETAIL



SILT FENCE DETAIL



HANDICAPPED PARKING STALLS



Graphical Peak Discharge method

| | |
|-------------------------------|------------------|
| Given Input Data: | |
| Description | AA-1 |
| Rainfall distribution | Type III |
| Frequency | 1 year |
| Rainfall, P (24-hours) | 8.5000 in |
| Drainage area | 0.2254 ac |
| Runoff curve number, CN | 94 |
| Time of concentration, Tc | 0.3300 hrs |
| Pond and Swamp Areas | 0.0000 % of Area |
| Computed Results: | |
| Initial obstruction, Ia | 0.1277 in |
| Ia/P | 0.1000 |
| Unit peak discharge, qu | 482.1782 csm/in |
| Runoff, Q | 7.7793 in |
| Pond and swamp adjustment, Fp | 1.0000 |
| Peak discharge, qp | 1.3211 cfs |

Graphical Peak Discharge method

| | |
|-------------------------------|------------------|
| Given Input Data: | |
| Description | AA-2 |
| Rainfall distribution | Type III |
| Frequency | 1 year |
| Rainfall, P (24-hours) | 8.5000 in |
| Drainage area | 0.3995 ac |
| Runoff curve number, CN | 94 |
| Time of concentration, Tc | 0.3300 hrs |
| Pond and Swamp Areas | 0.0000 % of Area |
| Computed Results: | |
| Initial obstruction, Ia | 0.1277 in |
| Ia/P | 0.1000 |
| Unit peak discharge, qu | 482.1782 csm/in |
| Runoff, Q | 7.7793 in |
| Pond and swamp adjustment, Fp | 1.0000 |
| Peak discharge, qp | 2.3414 cfs |

Graphical Peak Discharge method

| | |
|-------------------------------|------------------|
| Given Input Data: | |
| Description | AA-3 |
| Rainfall distribution | Type III |
| Frequency | 1 year |
| Rainfall, P (24-hours) | 8.5000 in |
| Drainage area | 0.4207 ac |
| Runoff curve number, CN | 94 |
| Time of concentration, Tc | 0.3300 hrs |
| Pond and Swamp Areas | 0.0000 % of Area |
| Computed Results: | |
| Initial obstruction, Ia | 0.1277 in |
| Ia/P | 0.1000 |
| Unit peak discharge, qu | 482.1782 csm/in |
| Runoff, Q | 7.7793 in |
| Pond and swamp adjustment, Fp | 1.0000 |
| Peak discharge, qp | 2.4657 cfs |

Graphical Peak Discharge method

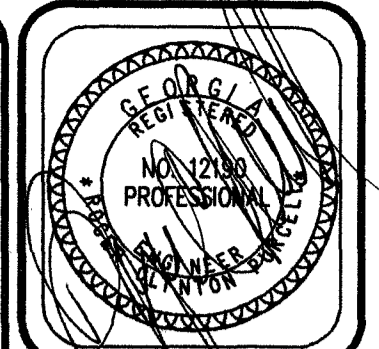
| | |
|-------------------------------|------------------|
| Given Input Data: | |
| Description | AA-4 |
| Rainfall distribution | Type III |
| Frequency | 1 year |
| Rainfall, P (24-hours) | 8.5000 in |
| Drainage area | 0.2658 ac |
| Runoff curve number, CN | 94 |
| Time of concentration, Tc | 0.3300 hrs |
| Pond and Swamp Areas | 0.0000 % of Area |
| Computed Results: | |
| Initial obstruction, Ia | 0.1277 in |
| Ia/P | 0.1000 |
| Unit peak discharge, qu | 482.1782 csm/in |
| Runoff, Q | 7.7793 in |
| Pond and swamp adjustment, Fp | 1.0000 |
| Peak discharge, qp | 1.5578 cfs |

Manning Pipe Calculator
18" DIA HDPL

| | |
|--------------------|-------------------------|
| Given Input Data: | |
| Shape | Circular |
| Solving for | Flowrate |
| Diameter | 18.0000 in |
| Depth | 18.0000 in |
| Slope | 0.0040 ft/ft |
| Manning's n | 0.0090 |
| Computed Results: | |
| Flowrate | 9.5982 cfs |
| Area | 1.7871 ft ² |
| Wetted Area | 1.7871 ft ² |
| Wetted Perimeter | 56.5487 in |
| Perimeter | 56.5487 in |
| Velocity | 5.4303 fps |
| Hydraulic Radius | 4.5000 in |
| Percent Full | 100.0000 % |
| Full flow Flowrate | 9.5982 cfs > 1.5578 CFS |
| Full flow velocity | 5.4303 fps |

Manning Pipe Calculator
24" DIA HDPL

| | |
|--------------------|--------------------------|
| Given Input Data: | |
| Shape | Circular |
| Solving for | Flowrate |
| Diameter | 24.0000 in |
| Depth | 24.0000 in |
| Slope | 0.0040 ft/ft |
| Manning's n | 0.0090 |
| Computed Results: | |
| Flowrate | 20.6666 cfs |
| Area | 3.1416 ft ² |
| Wetted Area | 3.1416 ft ² |
| Wetted Perimeter | 75.3982 in |
| Perimeter | 75.3982 in |
| Velocity | 6.5784 fps |
| Hydraulic Radius | 6.0000 in |
| Percent Full | 100.0000 % |
| Full flow Flowrate | 20.6666 cfs > 7.6860 CFS |
| Full flow velocity | 6.5784 fps |



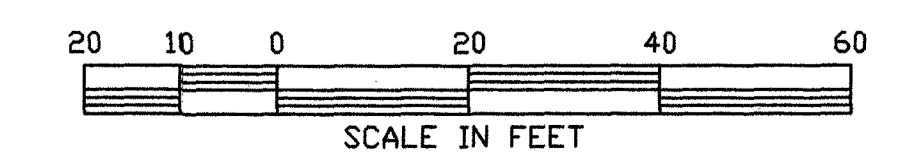
| | |
|-------------|--|
| NO. BY DATE | |
| REVISIONS | |

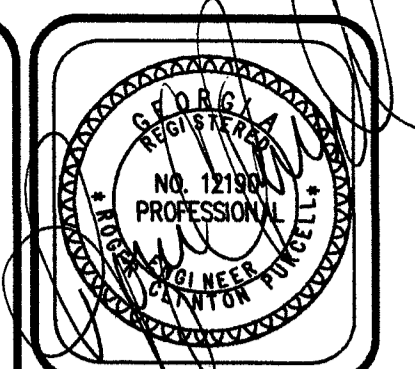
GRADING & DRAINAGE PLAN
ISLAND COTTAGE & BUSINESS CENTER
CIVIL DRAWINGS
GLYNN COUNTY GA.

PRUITT & PURCELL, P.C.
CIVIL AND STRUCTURAL ENGINEERS
SURVEYORS AND LAND PLANNERS
3101 CYPRESS MILL RD., BRUNSWICK, GA 31526 (912) 262-7638 (912) 262-4896

DRAWN BY GPR
DATE 4-15-98
JOB # 98017
CHECKED BCP
SCALE AS SHOWN
JOB FILE 98017

MAP
OF 10





| | |
|-------------|-------------------|
| NO. BY DATE | REVISIONS |
| 1 | BY G.C.P. 4-18-98 |
| 2 | BY G.C.P. 4-18-98 |
| 3 | BY G.C.P. 4-18-98 |
| 4 | BY G.C.P. 4-18-98 |
| 5 | BY G.C.P. 4-18-98 |

AS-BUILT UTILITY PLAN
(SEWER AND WATER)

ISLAND COTTAGE & BUSINESS CENTER
CIVIL DRAWINGS
GLYNN COUNTY, GA.

PRUITT & PURCELL, P.C.

CIVIL AND STRUCTURAL ENGINEERS
SURVEYORS AND LAND PLANNERS

5115 CYPRESS HILL RD., WENDELL, GA 31606 (912) 295-7008 (912) 295-4008

DRAWN BY G.P.P.
DATE 4-18-98
JOB # 98017
CHECKED R.C.P.
SCALE AS SHOWN
JOB FILE 98017

C-6
OF 10

LEGEND:

- SITE:**
- LA LANDSCAPE AREA
 - TC - TOP OF CURB(AT BACK)
 - EXISTING CURBLINE
 - PRO-CURB & GUTTER
 - PRO-HEADER CURB
 - BUILDING SETBACK LINE
 - EXISTING CONTOUR
 - - - 22 - - - PROPOSED CONTOUR
 - 22, 3 EXISTING SPOT ELEVATION
 - + 22.3 PROPOSED SPOT ELEVATION
 - AISLE/ROAD
 - SLOPE DIRECTION ARROW
 - XX FENCE
 - MARSH LINE \ WETLAND LINE
 - UNDERGROUND ELECTRIC LINE
 - DRAINAGE DITCH / SWALE
 - CLEARING LIMITS
- UTILITY:**
- EXISTING SANITARY SEWER
 - PROPOSED SANITARY SEWER
 - OE UTILITY/OVERHEAD ELEC.
 - UG UTILITY/GAS LINE
 - UG PROPOSED UTILITY/GAS LINE
 - PROPOSED WATER
 - EXISTING WATER
 - UT TELEPHONE LINE
 - CO CLEAN OUT
 - SANITARY SEWER MH
 - FH - FIRE HYDRANT
 - GV - GATE VALVE
 - DBFP - DOUBLE CHECK BACKFLOW PREVENTOR
 - WM - WATER METER
 - SVC - SERVICE
 - CBV - CURB BALL VALVE

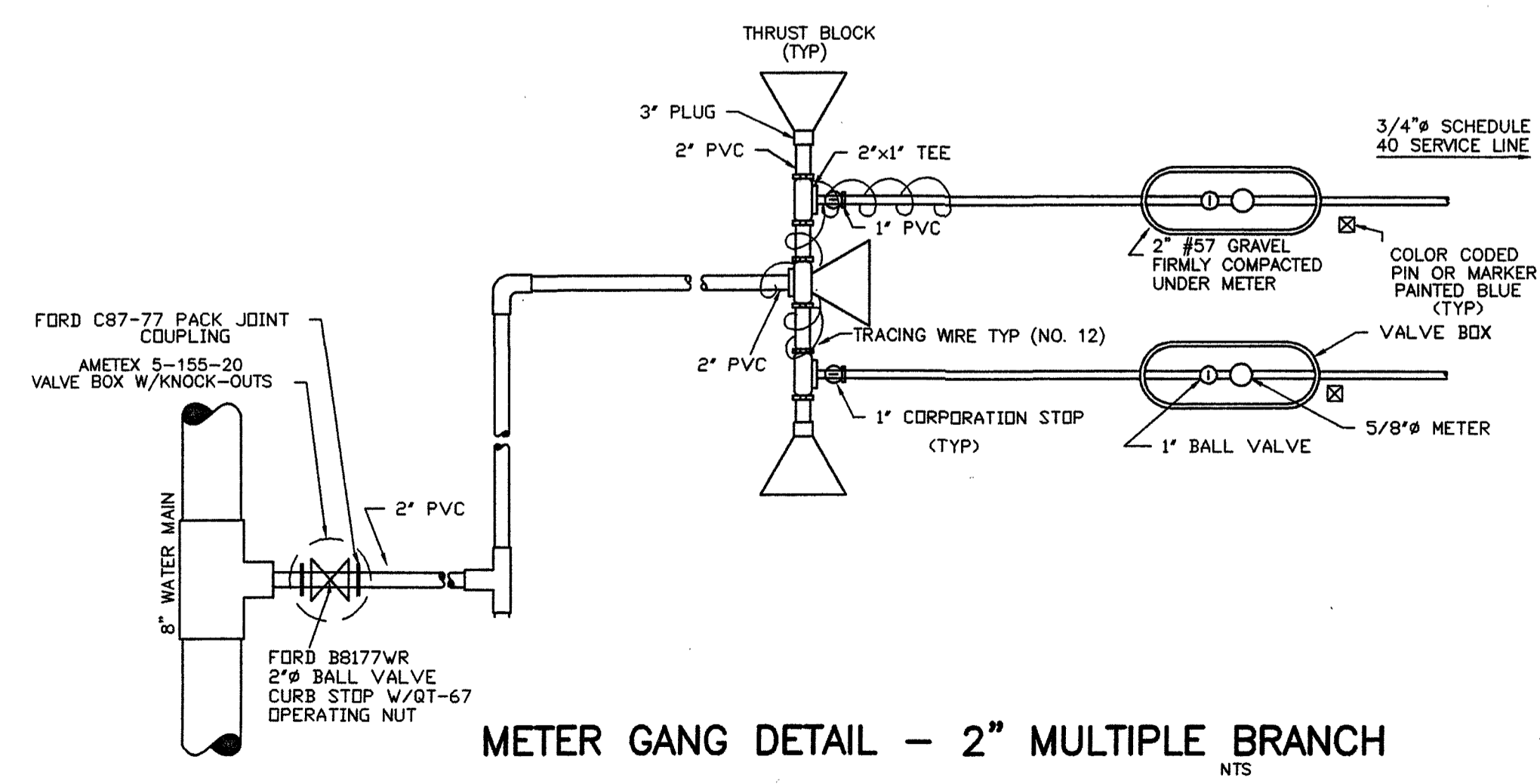
- EROSION CONTROL:**
- ROCK FILTER DAM
 - BF BUFFER
 - CO CONSTRUCTION EXIT / ENTRANCE
 - DI DIVERSION BERM PERM.
 - SL STORM OUTLET PROTECTION
 - LS2 RIP RAP 10 SQ YRDS OF 10-25 LB STONE
 - LS3 DISTURBED AREA STABILIZATION
 - LS4 PERMANENT SEEDING/LANDSCAPING
 - S41 SEDIMENT BARRIER (TEMP)
 - SLOPE DIRECTION ARROW
- STORM DRAINAGE:**
- SD STORM DRAIN MH
 - FLARED END SECTION
 - PROPOSED GRATE INLET
 - EXISTING GRATE INLET
 - SD PROPOSED JUNCTION BOX / MH
 - EXISTING JUNCTION BOX / MH
 - EXISTING STORM DRAIN
 - PROPOSED STORM DRAIN

AS-BUILT INFORMATION PROVIDED BY:
TRIANGLE CONSTRUCTION
P.O. BOX 2401
SAVANNAH, GA. 31402
(912) 234 0728

AS-BUILT DATED 12/02/98
AB = AS-BUILT

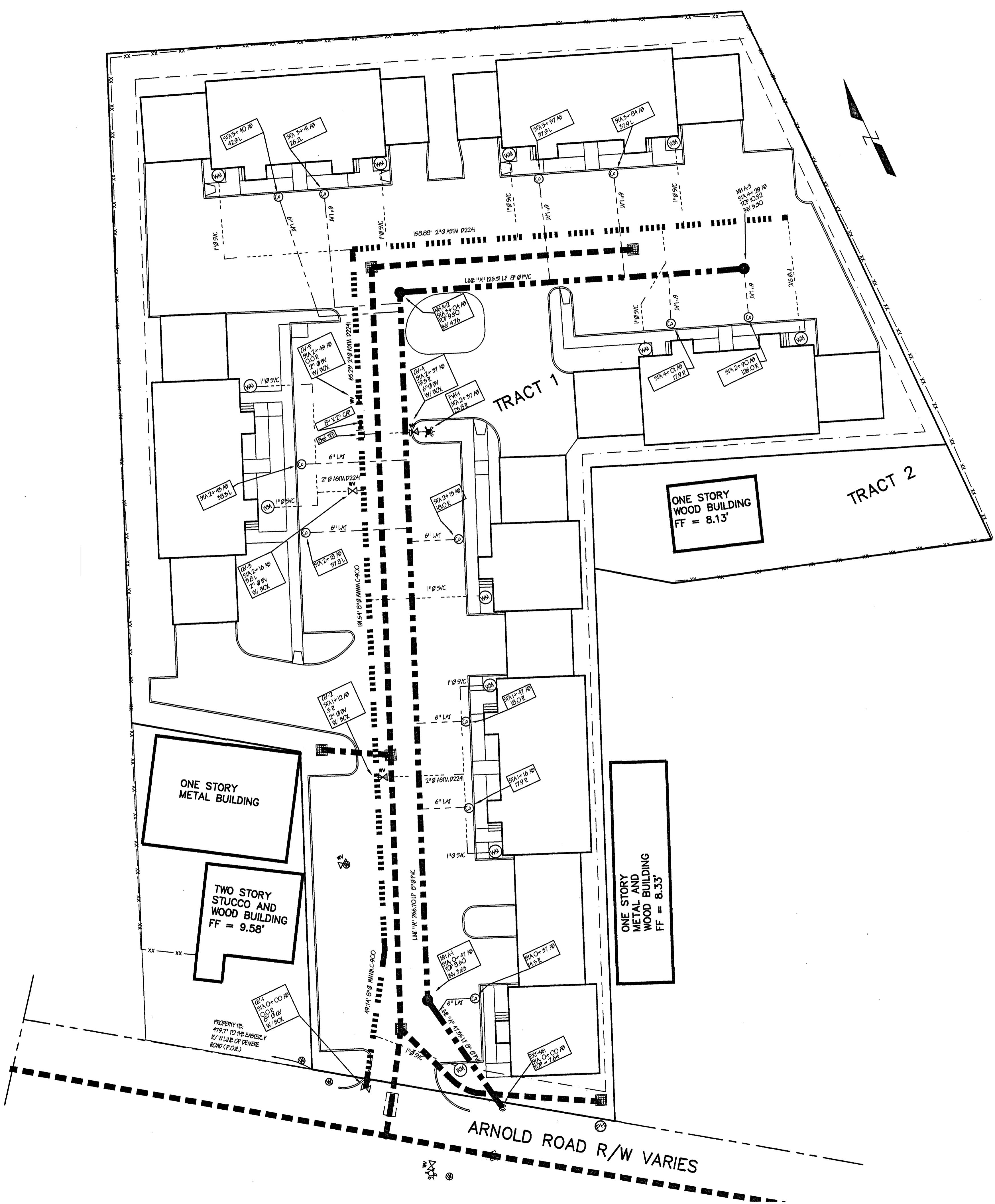
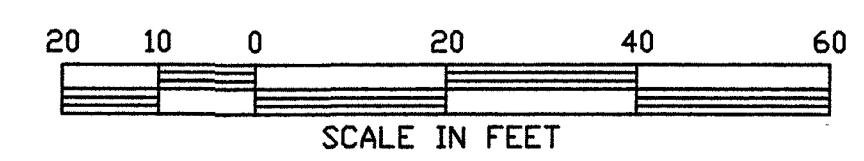
BUILDINGS AND OTHER
IMPROVEMENTS AS SHOWN
ARE PROPOSED

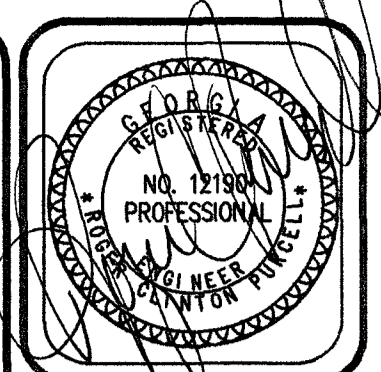
AS-BUILT UTILITY PLAN
(WATER AND SEWER
SYSTEMS)



METER GANG DETAIL - 2" MULTIPLE BRANCH

SEE SHEET C-9 FOR ADDITIONAL DETAILS





| | |
|-------------|-------------------|
| NO. BY DATE | BY |
| 1 | GLYNIS C. PURCELL |
| 2 | |
| 3 | |
| 4 | |
| 5 | |
| 6 | |
| 7 | |
| 8 | |
| 9 | |
| 10 | |

AS-BUILT UTILITY PLAN
 (SEWER AND WATER)
 ISLAND COTTAGE & BUSINESS CENTER
 CIVIL DRAWINGS
 GLYNN COUNTY, GA.

PRUITT & PURCELL, P.C.
 CIVIL AND STRUCTURAL ENGINEERS
 SURVEYORS AND LAND PLANNERS
 501 CYPRESS WALK, RD., BRUNSWICK, GA 31520 (912) 265-7600 (FAX) 265-4900

DRAWN BY: GPR
 DATE: 4-12-98
 JOB #: 98017
 CHECKED: RGP
 SCALE: AS SHOWN
 JOB FILE: 98017

C-6
 OF 10

LEGEND:

SITE:

- L.A. LANDSCAPE AREA
- TC - TOP OF CURB(AT BACK)
- EXISTING CURBLINE
- PRO-CURB & GUTTER
- PRO-HEADER CURB
- BUILDING SETBACK LINE
- - - - - EXISTING CONTOUR
- - - - - PROPOSED CONTOUR
- 22.3 EXISTING SPOT ELEVATION
- + 22.3 PROPOSED SPOT ELEVATION
- AISLE ROAD
- SLOPE DIRECTION ARROW
- XX FENCE
- MARSH LINE \ WETLAND LINE
- UNDERGROUND ELECTRIC LINE
- DRAINAGE DITCH / SWALE
- CLEARING LIMITS

UTILITY:

- EXISTING SANITARY SEWER
- PROPOSED SANITARY SEWER
- OE UTILITY/OVERHEAD ELEC.
- UG UTILITY/GAS LINE
- UG PROPOSED UTILITY/GAS LINE
- PROPOSED WATER
- EXISTING WATER
- TELEPHONE LINE
- CO CLEAN OUT
- SANITARY SEWER MH
- FH FIRE HYDRANT
- OV GATE VALVE
- DBTP DOUBLE CHECK BACKFLOW PREVENTOR
- WM WATER METER
- SVC SERVICE
- CBV CURB BALL VALVE

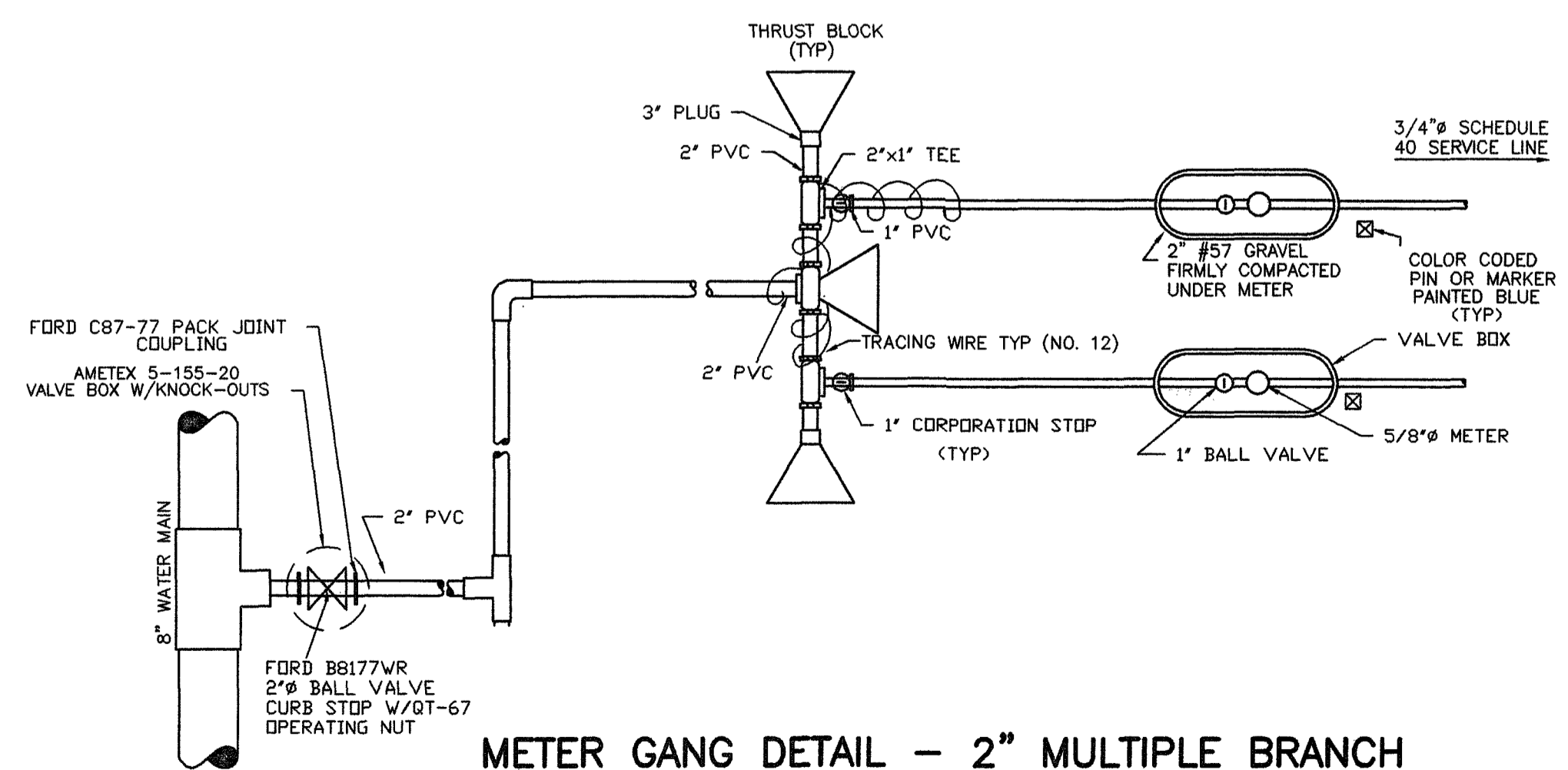
EROSION CONTROL:

- RO ROCK FILTER DAM
- BT BUFFER
- CO CONSTRUCTION EXIT / ENTRANCE
- DI DIVERSION BERM PERM.
- ST STORM OUTLET PROTECTION
RIP RAP 10 SQ YRDS OF 10-25 LB STONE
- D22 DISTURBED AREA STABILIZATION
TEMPORARY SEEDING
- D23 DISTURBED AREA STABILIZATION
PERMANENT SEEDING/LANDSCAPING
- Sd SEDIMENT BARRIER (TEMP)
- SLOPE DIRECTION ARROW

STORM DRAINAGE:

- SD STORM DRAIN MH
- FLARED END SECTION
- PROPOSED GRATE INLET
- EXISTING GRATE INLET
- SD PROPOSED JUNCTION BOX / MH
- EXISTING JUNCTION BOX / MH
- EXISTING STORM DRAIN
- PROPOSED STORM DRAIN

AS-BUILT INFORMATION PROVIDED BY:
 TRIANGLE CONSTRUCTION
 P.O. BOX 2401
 SAVANNAH, GA. 31402
 (912) 234 0728
 AS-BUILT DATED 12/02/98
 AB = AS-BUILT
 BUILDINGS AND OTHER
 IMPROVEMENTS AS SHOWN
 ARE PROPOSED
**AS-BUILT UTILITY PLAN
 (WATER AND SEWER
 SYSTEMS)**



METER GANG DETAIL - 2" MULTIPLE BRANCH
NTS

SEE SHEET C-9 FOR ADDITIONAL DETAILS

